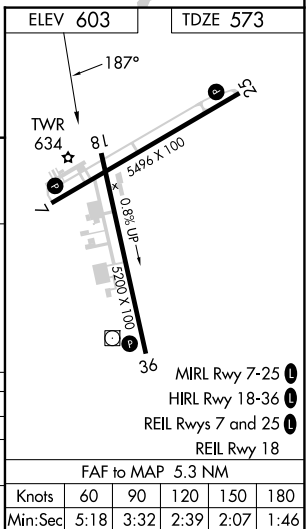
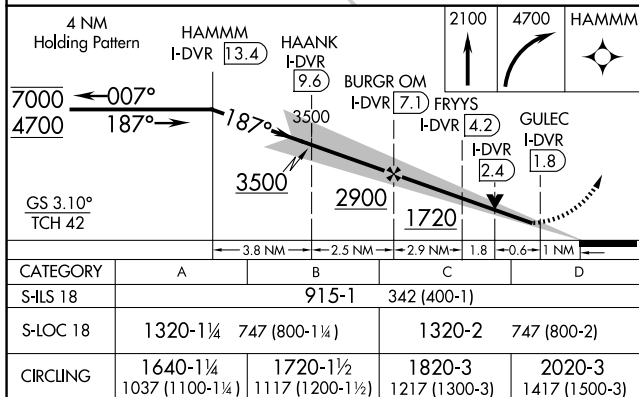
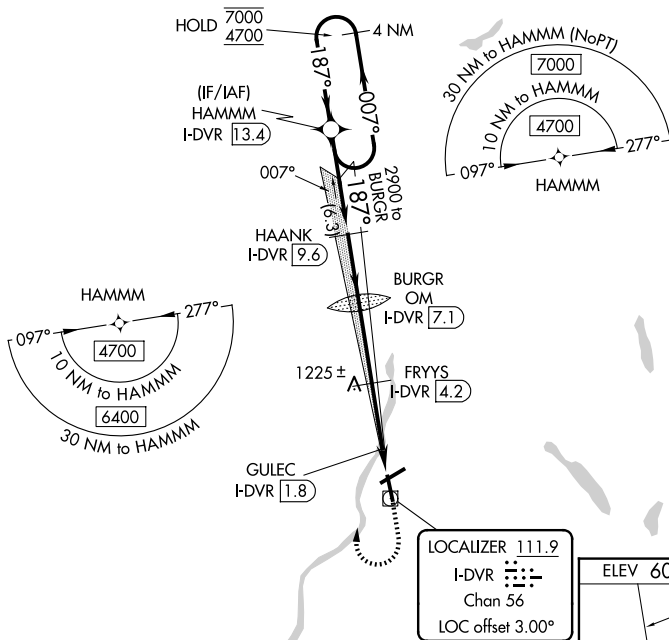


ILS or LOC RWY 18
LEBANON MUNI (LEB)

Autopilot coupled approach NA below 750.

MISSED APPROACH: Climb to 2100 then climbing right turn to 4700 direct HAMMM and hold, continue climb-in-hold to 4700.

ATIS 118.65	BOSTON CENTER 134.7 269.475	LEBANON TOWER ★ 125.95 (CTAF) 0 235.775	GND CON 121.6	UNICOM 122.95
-----------------------	---------------------------------------	---	-------------------------	-------------------------



NE-1, 07 AUG 2025 to 04 SEP 2025

NE-1, 07 AUG 2025 to 04 SEP 2025