

WAAS CH <b>90540</b> <b>W23A</b>	APP CRS <b>231°</b>	Rwy Idg TDZE <b>754</b> Apt Elev <b>782</b>	<b>6002</b>
--	------------------------	---	-------------

RNAV (GPS) RWY 23

ANDERSON RGNL (AND)

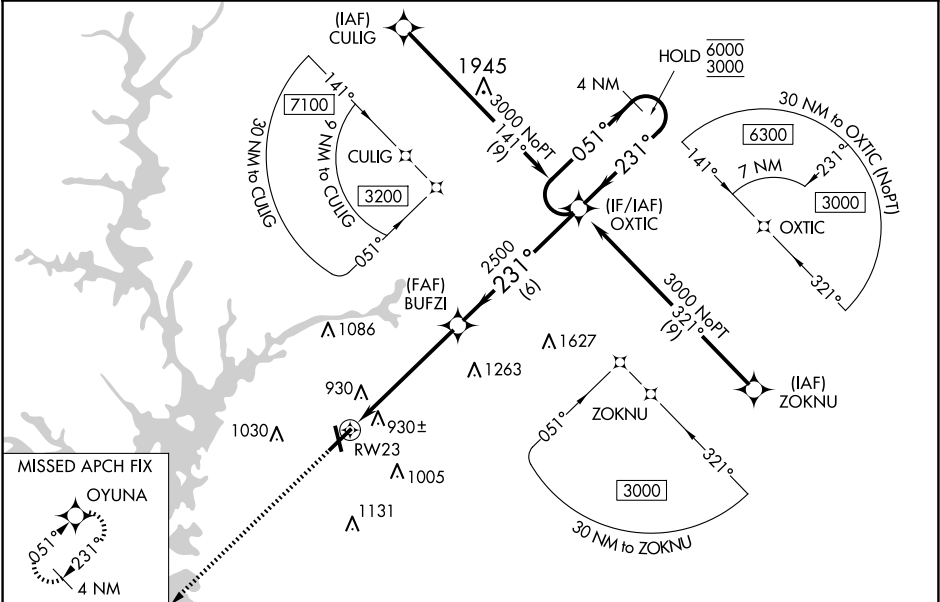
RNP APCH - GPS.

⚠

Circling Rwy 17, 35 NA at night. Baro-VNAV and VDP NA when using Clemson altimeter setting. Rwy 23 helicopter visibility reduction below ¾ SM NA. For uncompensated Baro-VNAV systems, LNAV/VNAV NA below -7°C or above 54°C. When local altimeter setting not received, use Clemson altimeter setting and increase LPV DA to 1149 feet and all visibilities ½ SM; increase LNAV/VNAV DA to 1267 feet; increase all MDAs 60 feet and visibility LNAV Cats C/D and Circling Cats C/D ¼ SM.

MISSED APPROACH: Climb to 2500 direct OYUNA and hold.

ASOS <b>120.675</b>	GREER APP CON ★ <b>118.8 270.275</b>	CTAF <b>123.6</b>
------------------------	---	----------------------



ELEV 782

TDZE 754

↑ 2500

OYUNA

231°

1.5 NM to RW23

1.5 NM

3.8 NM

6 NM

BUFZL 2500

OXTIC 4 NM Holding Pattern

GP 3.00° TCH 45

CATEGORY	A	B	C	D
LPV DA	1102-1 348 (400-1)			
LNAV/VNAV DA	1220-1⅜ 466 (500-1⅜)			
LNAV MDA	1280-1	526 (500-1)	1280-1½	526 (500-1½)
CIRCLING	1280-1 498 (500-1)	1320-1 538 (600-1)	1440-1¾ 658 (700-1¾)	1500-2¼ 718 (800-2¼)