

LOC/DME I-AND	APP CRS	Rwy Idg	6002
111.9	051°	TDZE	759
Chan 56		Apt Elev	782

ILS or LOC RWY 5

ANDERSON RGNL (AND)

DME required.

T

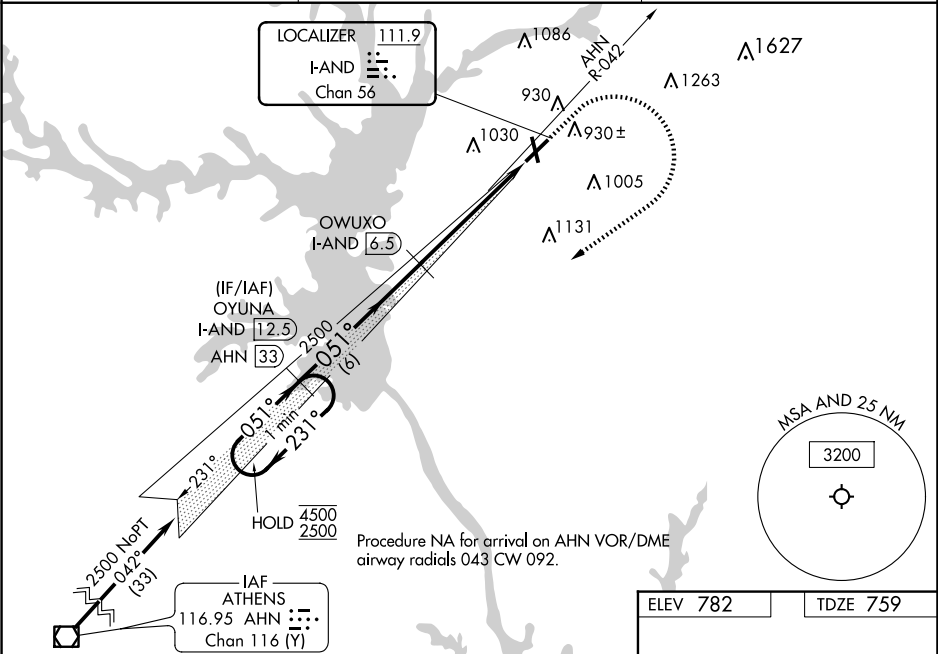
A

When local altimeter setting not received, use Clemson altimeter setting and increase S-ILS 05 DA to 1006 feet; increase all MDAs 60 feet and Circling visibility Cat C/D ¼ SM. VDP NA when using Clemson altimeter setting. Circling Rwy 17, 35 NA at night. For inop ALS increase S-LOC 05 visibility Cat C/D to 1⅓ SM.

MALSR

MISSED APPROACH: Climb to 1600 then climbing right turn to 2500 on heading 240° and on AHN VOR/DME R-042 to OYUNA/I-AND 12.5 DME and hold.

ASOS	GREER APP CON★	CTAF
120.675	118.8 270.275	123.60



VGSI and ILS glidepath not coincident (VGSI Angle 3.00/TCH 49).				
One Minute Holding Pattern				
<div><div>4500 2500</div><div>231° 051°</div><div>2500</div><div>6 NM 4 NM 1.3 NM</div></div>				
GS 3.00° TCH 54				
CATEGORY	A	B	C	D
S-ILS 5	959-½ 200 (200-½)			
S-LOC 5	1220-½	461 (500-½)	1220-1	461 (500-1)
CIRCLING	1260-1 478 (500-1)	1320-1 538 (600-1)	1440-1¾ 658 (700-1¾)	1500-2¼ 718 (800-2¼)

