

WAAS CH 99704 W35A	APP CRS 347°	Rwy Ldg TDZE Apt Elev	5000 1864 1864
--	------------------------	-----------------------------	---

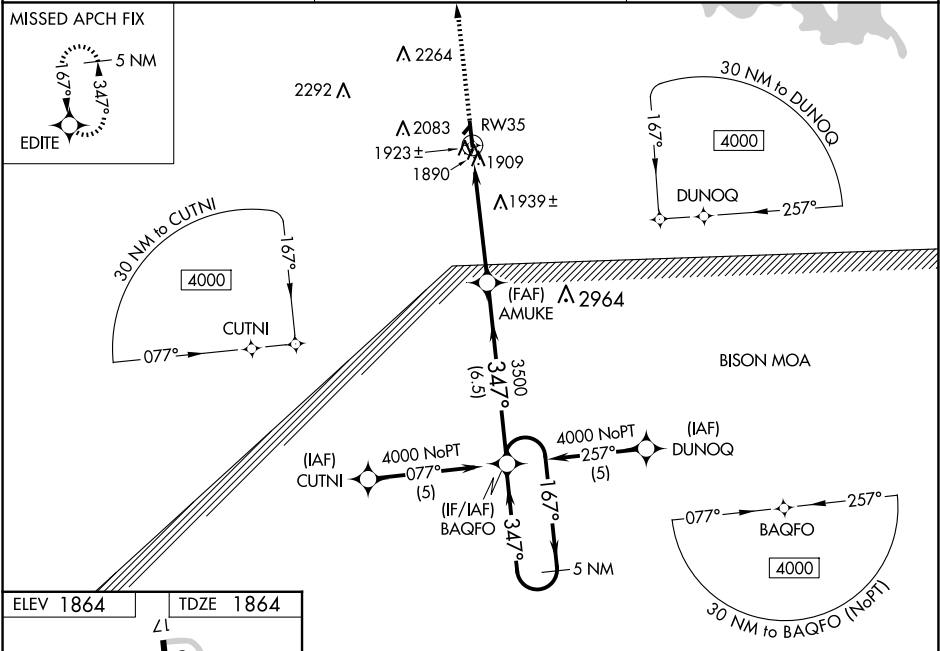
RNAV (GPS) RWY 35
RUSSELL MUNI (RSL)

⚠ Baro-VNAV NA when using Hays altimeter setting. For uncompensated Baro-VNAV systems, LNAV/VNAV NA below -18°C (0°F) or above 54°C (130°F). DME/DME RNP-0.3 NA.

VDP NA when using Hays altimeter setting. When local altimeter setting not received, use Hays altimeter setting: increase LPV all Cats DA to 2187 feet, LNAV/VNAV all Cats DA to 2267 feet and all visibilities ¼ SM; increase all MDA 80 feet, LNAV Cat C visibility ⅓ SM and Circling Cat C visibility ¼ SM. Circling NA to Rwys 3 and 21.

MISSED APPROACH:
Climb to 4000 direct
EDITE and hold.

ASOS 128.325	KANSAS CITY CENTER 124.4 322.4	UNICOM 122.7 (CTAF) 0
------------------------	--	---------------------------------



4000 **EDITE** **VGSI and RNAV glidepath not coincident (VGSI Angle 3.00/TCH 40).**

***LNAV only.** ***0.9 NM to RW35**

AMUKE **BAQFO** **5 NM Holding Pattern**

GP 3.00° TCH 35

0.9 NM **4.1 NM** **6.5 NM**

CATEGORY	A	B	C	D
LPV DA	2118-1	254 (300-1)		NA
LNAV/VNAV DA	2198-1½	334 (400-1½)		NA
LNAV MDA	2200-1	336 (400-1)		NA
CIRCLING	2240-1 376 (400-1)	2320-1 456 (500-1)	2620-2¼ 756 (800-2¼)	NA

NC-2, 07 AUG 2025 to 04 SEP 2025

NC-2, 07 AUG 2025 to 04 SEP 2025