

WAAS CH <b>93904</b> <b>W17A</b>	APP CRS <b>167°</b>	Rwy Ldg TDZE <b>1864</b> Apt Elev <b>1864</b>
--	------------------------	---

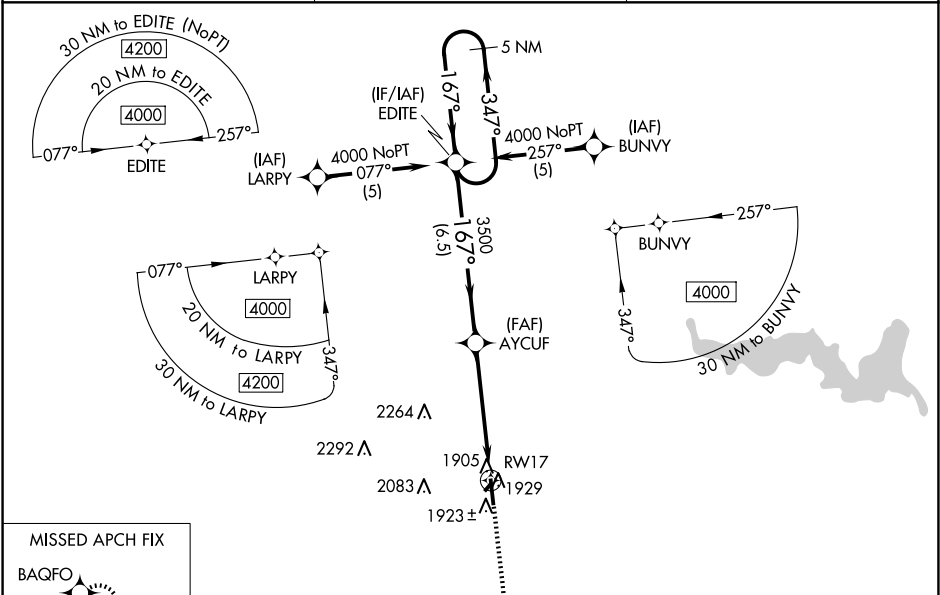
RNAV (GPS) RWY 17

RUSSELL MUNI (RSL)

**⚠** Baro-VNAV and VDP NA when using Hays altimeter setting. For uncompensated Baro-VNAV systems, LNAV/VNAV NA below -18°C (0°F) or above 54°C (130°F). DME/DME RNP-0.3 NA. Helicopter visibility reduction below ¾ SM NA. When local altimeter setting not received, use Hays altimeter setting: increase LPV DA all Cats to 2186 feet, LNAV/VNAV all Cats DA to 2244 feet and all visibilities ¼ SM; increase all MDA 80 feet and LNAV Cat C and Circling Cat C visibility ¼ SM. Circling NA to Rwys 3 and 21.

**MISSED APPROACH:**  
Climb to 4000 direct  
BAQFO and hold.

ASOS <b>128.325</b>	KANSAS CITY CENTER <b>124.4 322.4</b>	UNICOM <b>122.7 (CTAF) 0</b>
------------------------	--	---------------------------------



5 NM Holding Pattern		VGSi and RNAV glidepath not coincident (VGSi Angle 3.00/TCH 41).		ELEV 1864 TDZE 1864	
GP 3.00° TCH 36		AYCUF		BAQFO	
4000		3500		1602 x 500	
6.5 NM		4 NM		5000 x 75	
1 NM		1 NM		REIL Rwys 17 and 35	
CATEGORY		A		B	
LPV DA		2117-1		253 (300-1)	
LNAV/VNAV DA		2175-1½		311 (400-1½)	
LNAV MDA		2220-1		356 (400-1)	
CIRCLING		2240-1		2320-1	
		376 (400-1)		456 (500-1)	
		2620-2¼		756 (800-2¼)	
				NA	

NC-2, 07 AUG 2025 to 04 SEP 2025

NC-2, 07 AUG 2025 to 04 SEP 2025