

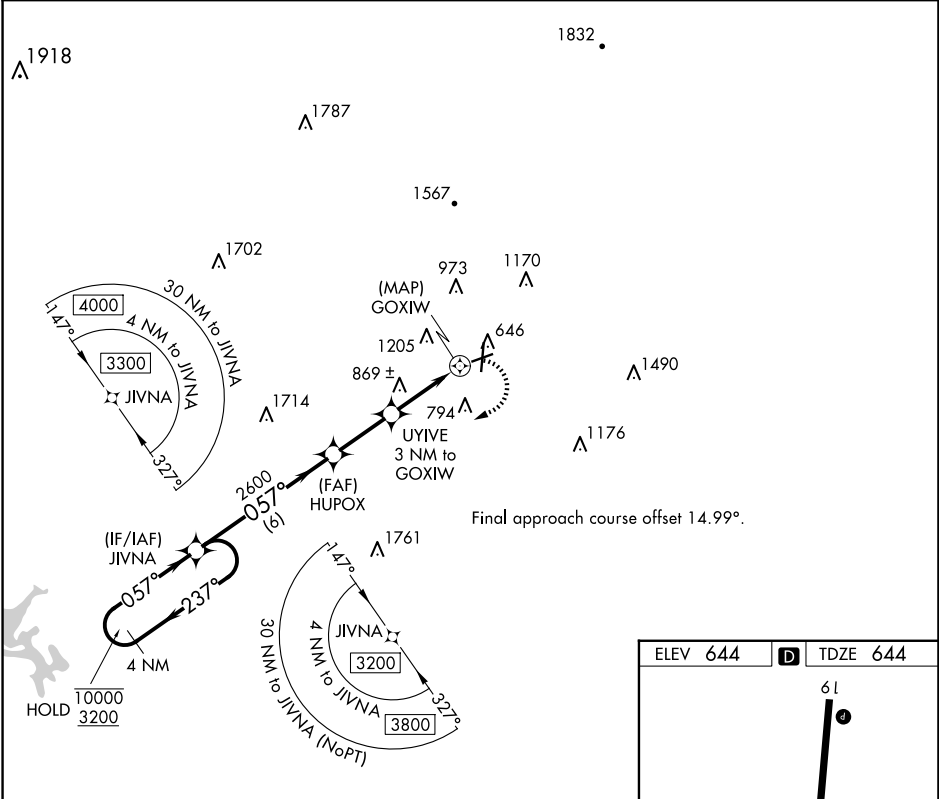
APP CRS	Rwy Ldg	4380
057°	TDZE	644
	Apt Elev	644

RNAV (GPS) RWY 7

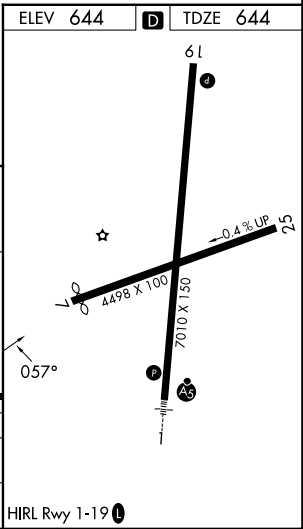
RICHARD B RUSSELL RGNL - J H TOWERS FLD (RMG)

RNP APCH - GPS.	MISSED APPROACH: Climbing right turn to 3200 direct JIVNA and hold.
▼ ▲	Rwy 7 helicopter visibility reduction below ¾ SM NA. Straight-in minimums NA at night. Circling NA northwest of Rwys 7 and 19.

ASOS 119.925	ATLANTA CENTER 124.5 270.325	GCO 121.725	UNICOM 122.725 (CTAF) 0
-----------------	---------------------------------	----------------	----------------------------



4 NM Holding Pattern	JIVNA	HUPOX	UYIVE 3 NM to GOXIW	3200	JIVNA
10000 3200	←237° 057°→	057°	3.00° TCH 45	2600	1800
	6 NM	2.5 NM	1.3 NM	1.7	0.5
CATEGORY	A	B	C	D	
LNAV MDA	1380-1	736 (800-1)	1380-2	736 (800-2)	
CIRCLING	1380-1	736 (800-1)	1480-2½ 836 (900-2½)	1840-3 1196 (1200-3)	



RNAV (GPS) RWY 7

SE-4, 07 AUG 2025 to 04 SEP 2025

SE-4, 07 AUG 2025 to 04 SEP 2025