

WAAS CH <b>48811</b> <b>W19A</b>	APP CRS <b>187°</b>	Rwy Ldg TDZE Apt Elev	<b>7010</b> <b>631</b> <b>644</b>
--	------------------------	-----------------------------	---

RNAV (GPS) RWY 19

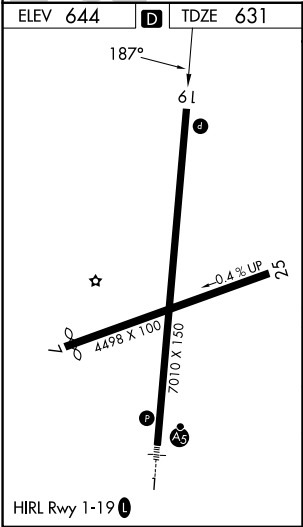
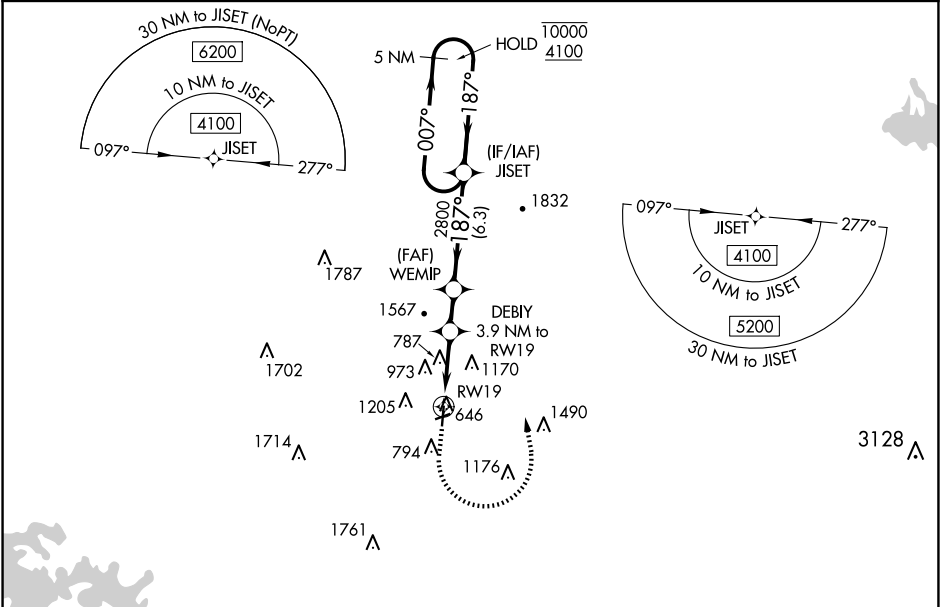
RICHARD B RUSSELL RGNL - J H TOWERS FLD (RMG)

RNP APCH - GPS.

Rwy 19 helicopter visibility reduction below 1 SM NA. For uncompensated Baro-VNAV systems, LNAV/VNAV NA below -6°C or above 54°C. Circling NA west of Rwy 1-19 at night. Circling NA northwest of Rwys 7 and 19. Straight-in Rwy 19 NA at night, Circling Rwy 19 NA at night.

MISSED APPROACH: Climb to 2000 then climbing left turn to 4100 direct JISET and hold.

ASOS <b>119.925</b>	ATLANTA CENTER <b>124.5 270.325</b>	GCO <b>121.725</b>	UNICOM <b>122.725 (CTAF)</b>
------------------------	--	-----------------------	---------------------------------



ELEV 644	D	TDZE 631
2000	4100	JISET
VGSI and RNAV glidepath not coincident (VGSI Angle 3.00/TCH 41).		
5 NM Holding Pattern		
WEMIP 2800		
DEBIY 3.9 NM to RW19		
RW19 2020		
GP 3.25° TCH 60		
CATEGORY	A	B
LPV DA	1013-1 382 (400-1 1/2)	
LNAV/VNAV DA	1003-1 372 (400-1)	
LNAV MDA	1040-1 409 (400-1)	1040-1 1/2 409 (400-1 1/2)
CIRCLING	1140-1 496 (500-1)	1200-1 556 (600-1)
	1480-2 1/2 836 (900-2 1/2)	1840-3 1196 (1200-3)