

LOC/DME I-HBQ 111.15 Chan 48(Y)	APP CRS 007°	Rwy Ldg TDZE 636 Apt Elev 644
---	------------------------	---

ILS or LOC RWY 1

RICHARD B RUSSELL RGNL - J H TOWERS FLD (RMG)

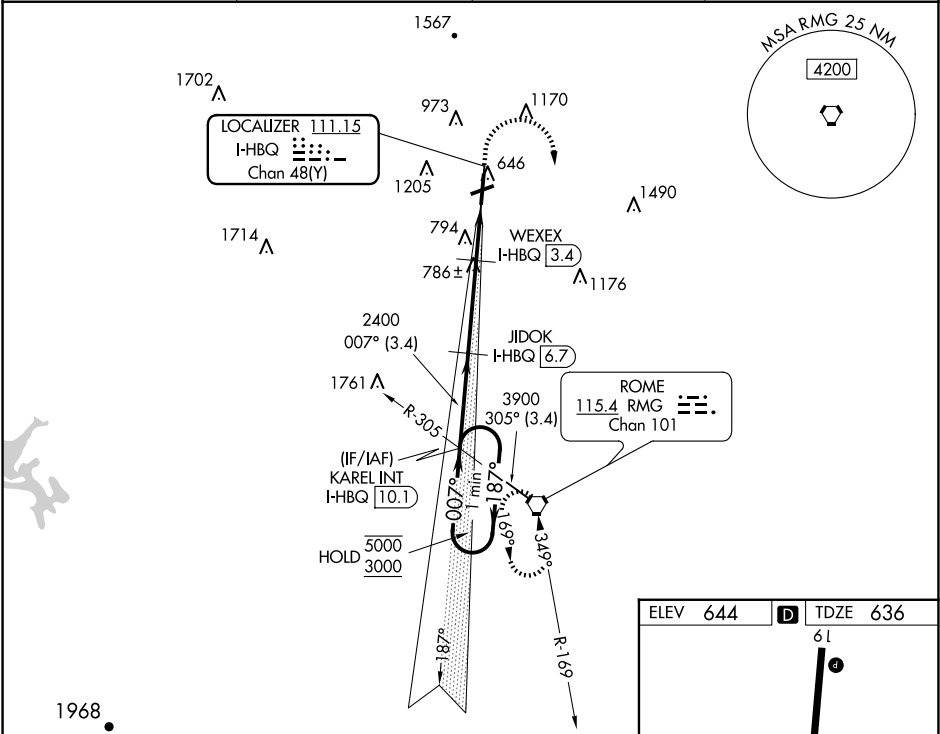
DME required for LOC only.

⚠ Rwy 1 helicopter visibility reduction below $\frac{3}{4}$ SM NA. Circling NA west of Rwy 1-19 at night. Circling NA northwest of Rwy 7 and 19. For inop ALS, increase S-ILS 1 all Cats visibility to $\frac{7}{8}$ SM and increase S-LOC 1 Cats A/B visibility to 1 SM and increase Cats C/D visibility to $\frac{1}{8}$ SM.

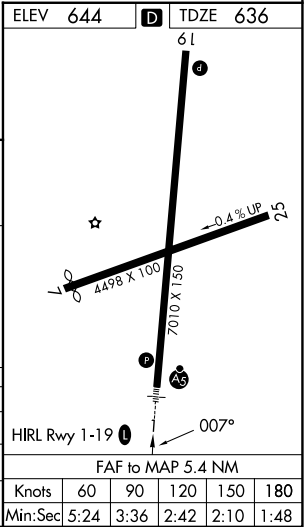
MALSR

MISSED APPROACH: Climb to 1200 then climbing right turn to 4000 direct RMG VORTAC and hold, continue climb-in-hold to 4000.

ASOS 119.925	ATLANTA CENTER 124.5 270.325	GCO 121.725	UNICOM 122.725 (CTAF) 0
------------------------	--	-----------------------	-----------------------------------



One Minute Holding Pattern		KAREL INT I-HBQ 10.1	JIDOK I-HBQ 6.7	WEXEX I-HBQ 3.4	1200	4000	RMG
5000 ← 187°		007° →	007°	2400	1340		
GS 3.00° TCH 49							
3.4 NM		3.3 NM	1 NM	1.1 NM			
CATEGORY	A	B	C	D			
S-ILS 1	941- $\frac{3}{4}$ 305 (300- $\frac{3}{4}$)						
S-LOC 1	1040- $\frac{3}{4}$ 404 (400- $\frac{3}{4}$)						
CIRCLING	1140-1 496 (500-1)	1200-1 556 (600-1)	1480-2 $\frac{1}{2}$ 836 (900-2 $\frac{1}{2}$)	1840-3 1196 (1200-3)			



ILS or LOC RWY 1

SE-4, 07 AUG 2025 to 04 SEP 2025

SE-4, 07 AUG 2025 to 04 SEP 2025