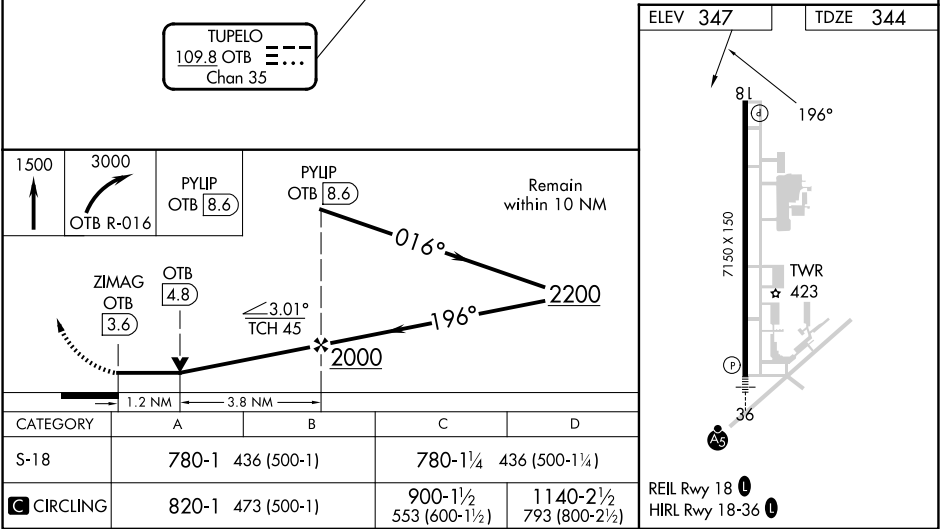
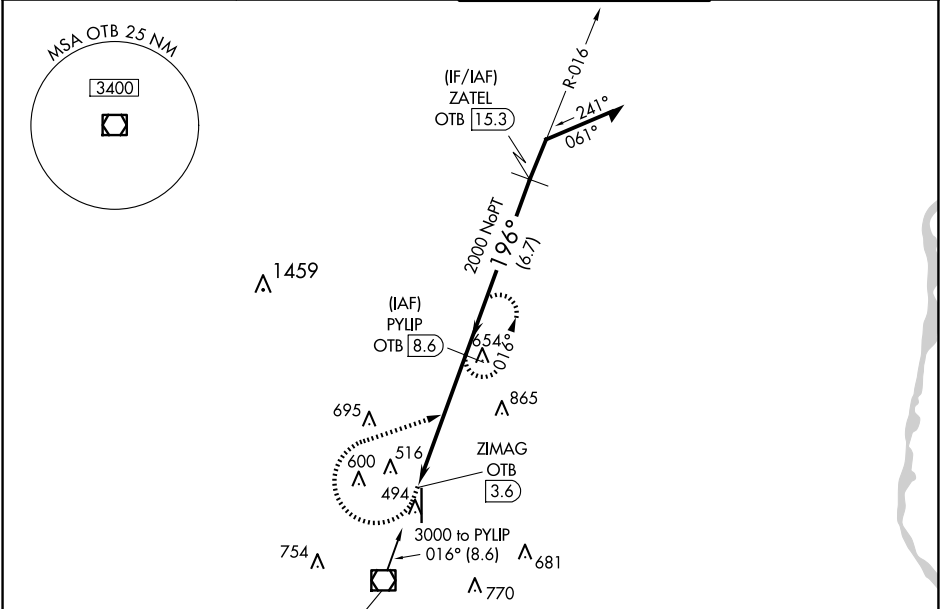


RADAR required for procedure entry. DME required.

When local altimeter setting not received, use Columbus AFB altimeter setting and increase all MDA 120 feet. Increase S-18 Cat C/D visibility ¾ SM; increase Circling Cat C/D visibility ½ SM. VDP NA when using Columbus AFB altimeter setting.

MISSED APPROACH: Climb to 1500 then climbing right turn to 3000 on OTB VOR/DME R-016 to PYLIP/OTB 8.6 DME and hold.

| | | | |
|-----------------|--------------------------------|--|----------------------------|
| ASOS 133.525 | MEMPHIS CENTER 128.5 279.55 | TUPELO TOWER ★ 118.775 (CTAF) 0 254.275 | GND CON 121.825 254.275 |
|-----------------|--------------------------------|--|----------------------------|



| CATEGORY | A | B | C | D |
|----------|-------------------|---|---------------------|----------------------|
| S-18 | 780-1 436 (500-1) | | 780-1¼ 436 (500-1¼) | |
| CIRCLING | 820-1 473 (500-1) | | 900-1½ 553 (600-1½) | 1140-2½ 793 (800-2½) |

ELEV 347

TDZE 344

81

196°

7150 X 150

TWR 423

36

REIL Rwy 18 0

HIRL Rwy 18-36 0