

LOM TU	APP CRS	Rwy Idg	7150
420	001°	TDZE	347
		Apt Elev	347

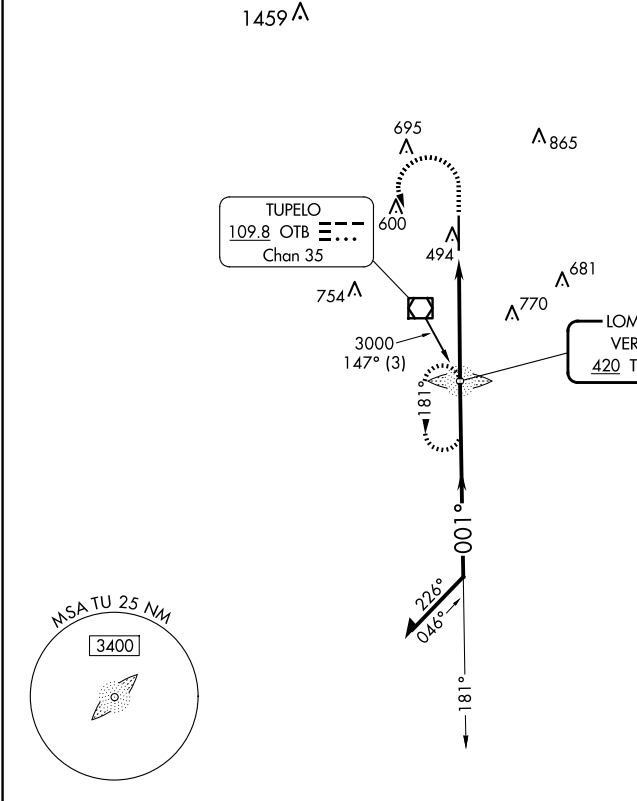
NDB RWY 36  
TUPELO RGNL (TUP)




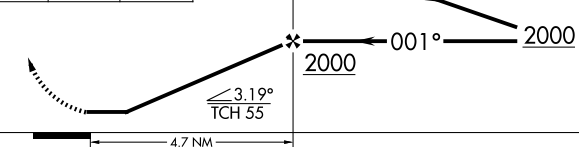

**⚠** When local altimeter setting not received, use Columbus AFB altimeter setting and increase all MDA 120 feet, increase S-36 Cats C and D visibility ¾ SM and Circling Cats C and D ½ SM. For inop ALS, increase S-36 Cat A and B visibility to 1 SM and Cat C and D to 1 ¾ SM. For inop ALS when using Columbus AFB altimeter setting, increase S-36 Cat A and B visibility to 1 SM and Cat C and D to 1 ¾ SM.

**MALSR**  
A5

**MISSED APPROACH:**  
Climb to 1500 then climbing left turn to 3000 direct TU LOM and hold.

ASOS 133.525	MEMPHIS CENTER 128.5 279.55	TUPELO TOWER ★ 118.775 (CTAF) 254.275	GND CON 121.825 254.275
-----------------	--------------------------------	--	----------------------------



1500	3000	TU		
				
				
CATEGORY	A	B	C	D
S- 36	840-¾ 493 (500-¾)		840-1 493 (500-1)	
 CIRCLING	840-1 493 (500-1)		900-1½ 553 (600-1½)	1140-2½ 793 (800-2½)

