

LOC/DME I-TUP 108.5 Chan 22	APP CRS 002°	Rwy Idg TDZE Apt Elev	7150 347 347
-------------------------------------------------	------------------------	-----------------------------	-----------------------------------------

ILS Y or LOC Y RWY 36
TUPELO RGNL (TUP)

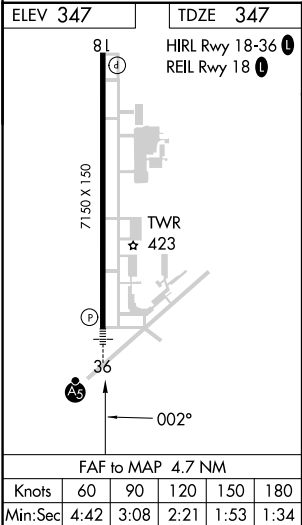
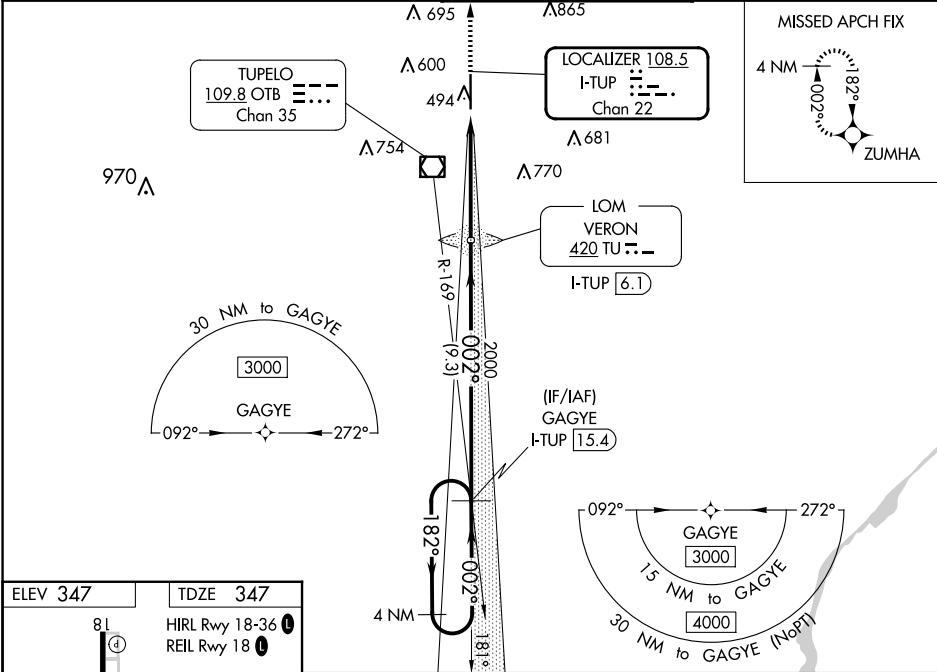
RNAV 1-GPS required.
DME or ADF required for LOC only.

⚠ When local altimeter setting not received, use Columbus AFB altimeter setting and increase all DA 112 feet and all MDA 120 feet; increase S-LOC 36 Cat C and D visibility $\frac{3}{8}$ SM and Circling Cat C and D visibility $\frac{1}{2}$ SM. For inop ALS when using Columbus AFB altimeter setting, increase S-ILS 36 all Cats visibility $\frac{1}{2}$ SM. VDP NA when using Columbus AFB altimeter setting. Autopilot coupled approach NA below 650 feet.

MALSR

MISSED APPROACH:
Climb to 3000 direct
ZUMHA and hold.

ASOS 133.525	MEMPHIS CENTER 128.5 279.55	TUPELO TOWER ★ 118.775 (CTAF) 0 254.275	GND CON 121.825 254.275
------------------------	---------------------------------------	---------------------------------------------------	-----------------------------------



3000	ZUMHA	Use I-TUP DME when on the localizer course.			
*LOC only	VERON LOM I-TUP 6.1	GAGYE I-TUP 15.4	4 NM Holding Pattern		
I-TUP 1.3	*I-TUP 2.2	1924	002°	182°	3000
0.9 NM	3.8 NM	9.3 NM	2000	GS 3.00° TCH 55	
CATEGORY	A	B	C	D	
S-ILS 36	547- $\frac{1}{2}$		200 (200- $\frac{1}{2}$)		
S-LOC 36	700- $\frac{1}{2}$	353 (400- $\frac{1}{2}$)	700- $\frac{5}{8}$	353 (400- $\frac{5}{8}$)	
CIRCLING	820-1	473 (500-1)	900-1 $\frac{1}{2}$	1140-2 $\frac{1}{2}$	
			553 (600-1 $\frac{1}{2}$)	793 (800-2 $\frac{1}{2}$)	