


APP CRS	Rwy Idg	6215
053°	TDZE	947
	Apt Elev	947

RNAV (RNP) Z RWY 5
WEST VIRGINIA INTL YEAGER (CRW)

RNP AR APCH - GPS.		MISSED APPROACH: Climb to 3000 on track 053° to ENIVY and hold.		
 For uncompensated Baro-VNAV systems, procedure NA below -17°C or above 54°C.				
ATIS 127.6	CHARLESTON APP CON 124.1 269.125	CHARLESTON TOWER 125.7 257.8	GND CON 121.8 348.6	CLNC DEL 118.55

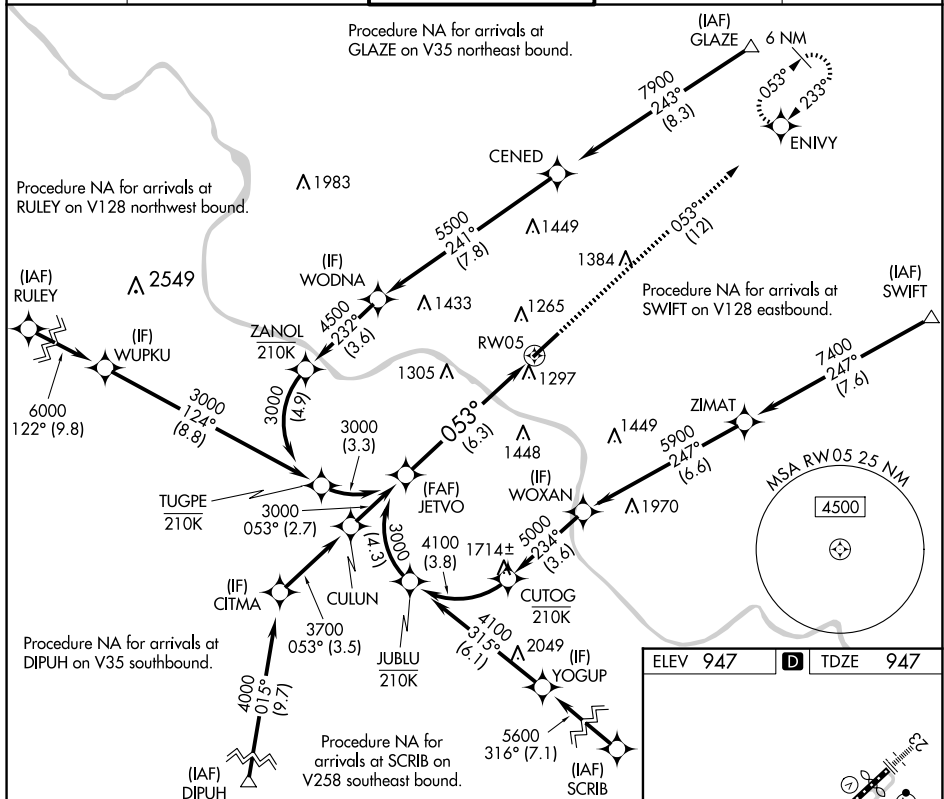


Diagram illustrating the 3000m depth contour from JETVO to RW05. The contour is a straight line with a bearing of 053°. The distance between JETVO and RW05 is 6.3 NM. A planview reference is shown in the top right corner.

CATEGORY	A	B	C	D
RNP 0.10 DA		1197/40	250 (300-¾)	
RNP 0.30 DA		1607-17/8	660 (700-17/8)	

AUTHORIZATION REQUIRED

