

APP CRS
233°

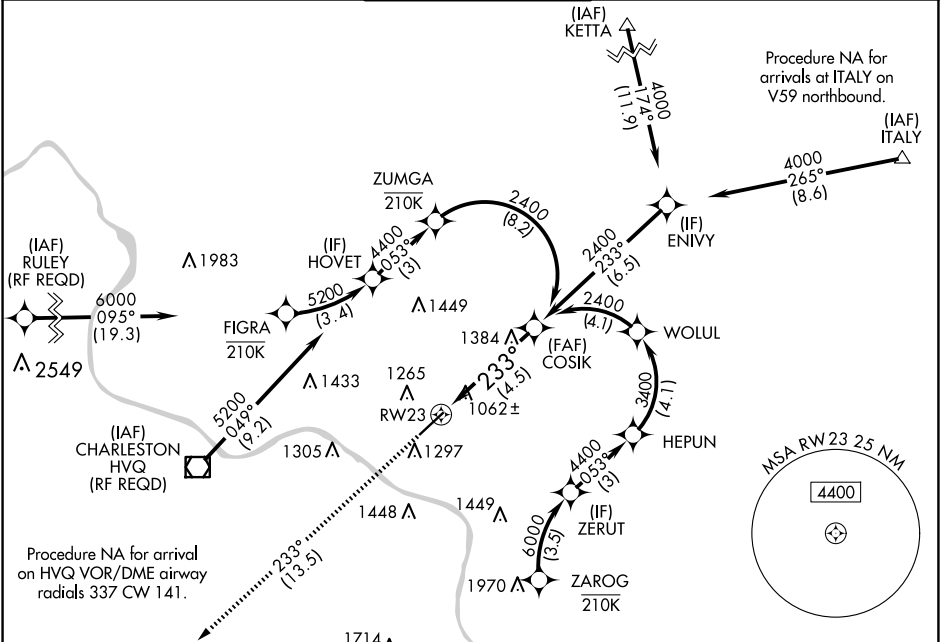
Rwy Idg
TDZE
Apt Elev

6215
931
947

RNAV (RNP) Z RWY 23

WEST VIRGINIA INTL YEAGER (CRW)

RNP AR APCH - GPS.		ALSF-1	MISSED APPROACH: Climb to 4000 on track 233° to CITMA and hold.	
For uncompensated Baro-VNAV systems, procedure NA below -15°C or above 54°C. For inop ALS, increase RNP 0.30 all Cats visibility to 1½ SM.				
ATIS 127.6	CHARLESTON APP CON 124.1 269.125	CHARLESTON TOWER 125.7 257.8	GND CON 121.8 348.6	CLNC DEL 118.55



ELEV 947

TDZE 931

6 NM

CITMA

See planview for multiple IF locations.

RW23

GP 3.00°

TCH 56

4000

tr 233°

CITMA

RW23

GP 3.00°

TCH 56

CATEGORY	A	B	C	D
RNP 0.30 DA	1419/60	488 (500-1¼)		

AUTHORIZATION REQUIRED

HIRL Rwy 5-23

REIL Rwy 5