

LOC/DME I-HCV	APP CRS	Rwy Idg	6215
110.3	052°	TDZE	947
Chan 40		Apt Elev	947

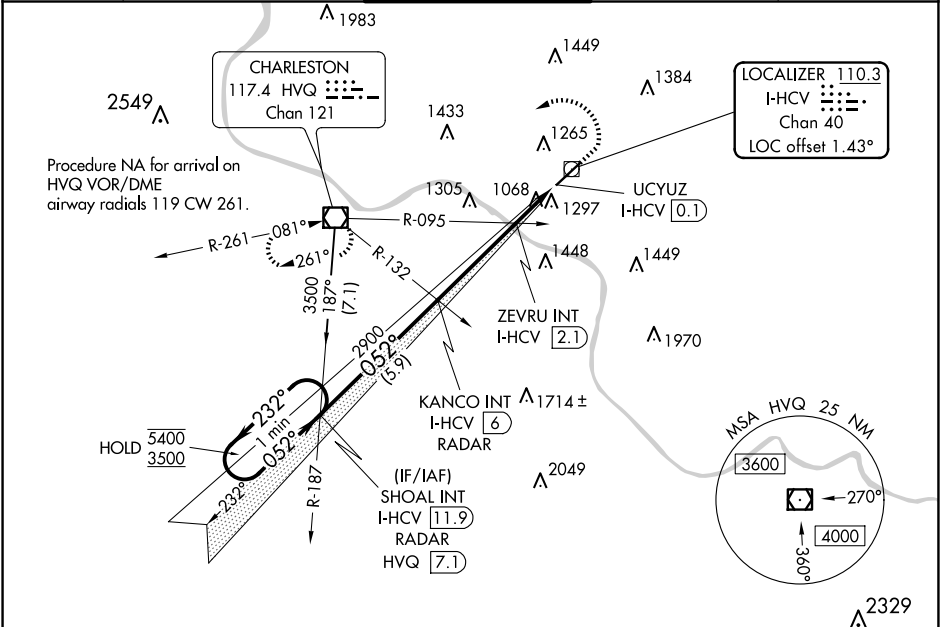
ILS or LOC RWY 5

WEST VIRGINIA INTL YEAGER (CRW)

Autopilot coupled approach NA below 1300.

MISSED APPROACH: Climb to 1800 then climbing left turn to 3500 direct HVQ VOR/DME and hold.

ATIS 127.6	CHARLESTON APP CON 124.1 269.125	CHARLESTON TOWER 125.7 257.8	GND CON 121.8 348.6	CLNC DEL 118.55
---------------	-------------------------------------	---------------------------------	------------------------	--------------------



<div>One Minute Holding Pattern</div> <div><div>5400</div><div>3500</div></div> <div><div>GS 3.00°</div><div>TCH 56</div></div>					<div>SHOAL INT I-HCV 11.9 RADAR</div> <div>2900</div> <div>052°</div> <div>052°</div> <div>2900</div> <div>1640</div> <div>5.9 NM</div> <div>3.9 NM</div> <div>1 NM</div> <div>1 NM</div> <div>0.1</div>					<div>1800</div> <div>3500</div> <div>HVQ</div> <div><div>ZEVRU INT I-HCV 2.1</div><div>I-HCV DME ANTENNA</div><div>I-HCV UCYUZ I-HCV 0.1</div></div>					<div>ELEV 947</div> <div>D</div> <div>TDZE 947</div> <div><div>6715 x 150</div><div>0-8% UP</div><div>TWR 1037</div></div> <div>052°</div>				
CATEGORY		A		B		C		D											
S-ILS 5				1197/40		250 (300-¾)													
S-LOC 5		1640/55		693 (700-1)		1640-2		693 (700-2)											
CIRCLING		1640-1		693 (700-1)		1760-2½ 813 (900-2½)		1880-3 933 (1000-3)											
ZEVRU FIX MINIMUMS (DUAL VOR RECEIVERS OR DME REQUIRED)																			
S-LOC 5				1320/55		373 (400-1)				FAF to MAP 5.9 NM									
CIRCLING		1600-1		653 (700-1)		1760-2½ 813 (900-2½)		1880-3 933 (1000-3)											
										Knots 60 90 120 150 180									
										Min:Sec 5:54 3:56 2:57 2:22 1:58									