

HOBBS, NEW MEXICO

AL-851 (FAA)

25163

VORTAC HOB <u>111.0</u> Chan 47	APP CRS 212°	Rwy Ldg 8000 TDZE 3649 Apt Elev 3661
---------------------------------------	-----------------	--

VOR or TACAN RWY 22
LEA COUNTY RGNL (HOB)

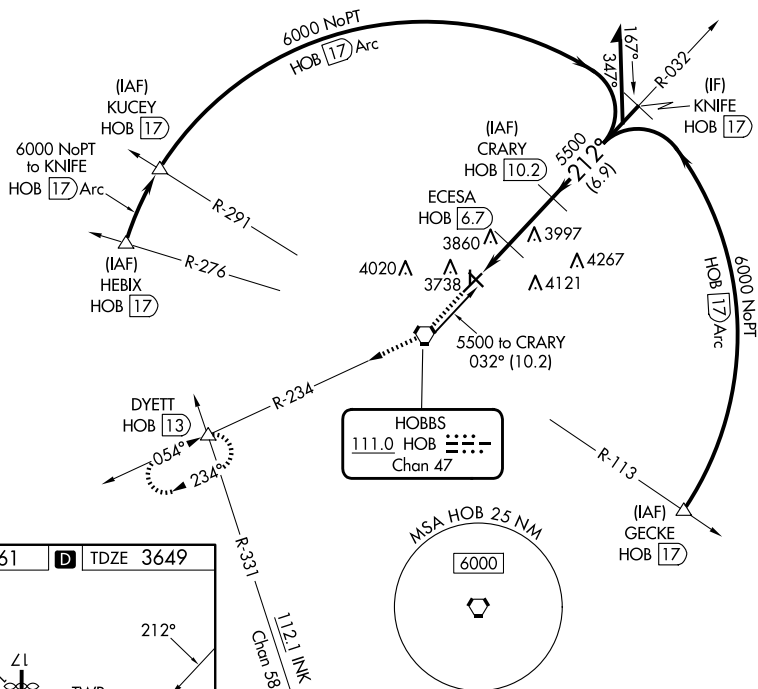
DME required.

T
A Circling Rwy 17, 35 NA at night.

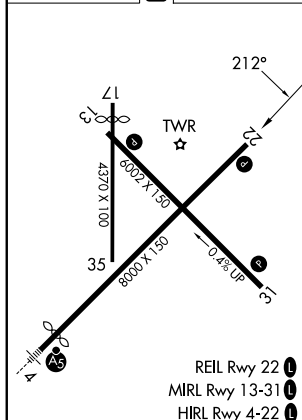
MISSED APPROACH: Climb to 6000 direct HOB VORTAC then on HOB VORTAC R-234 to DYETT INT/HOB 13 DME and hold.

ATIS 119.75	FORT WORTH CENTER 133.1 298.95	HOBBS TOWER* 120.65 (CTAF) 0 317.4	GND CON 121.9	UNICOM 122.95
-----------------------	--	--	-------------------------	-------------------------

A 4983



ELEV 3661	D	TDZE 3649
-----------	----------	-----------



CATEGORY	A	B	C	D
S-22	4120-1	471 (500-1)	4120-1 $\frac{3}{8}$	471 (500-1 $\frac{3}{8}$)
C CIRCLING	4120-1 459 (500-1)	4160-1 499 (500-1)	4440-2 $\frac{1}{4}$ 779 (800-2 $\frac{1}{4}$)	4440-2 $\frac{1}{2}$ 779 (800-2 $\frac{1}{2}$)

HOBBS, NEW MEXICO
Amdt 10 31OCT24

32°41'N-103°13'W

LEA COUNTY RGNL (H0B)

VOR or TACAN RWY 22

SW-1, 07 AUG 2025 to 04 SEP 2025

SW-1, 07 AUG 2025 to 04 SEP 2025