

VOR/DME PHP
115.55
Chan **102(Y)**

APP CRS
089°

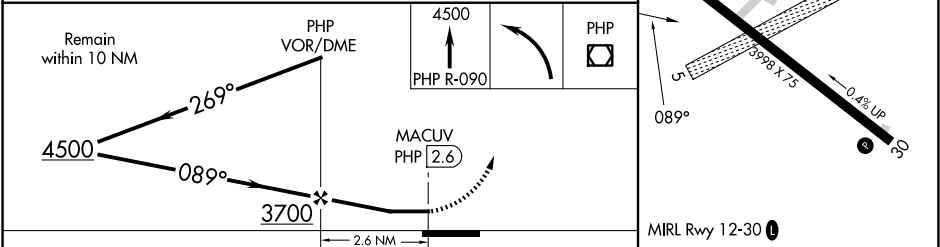
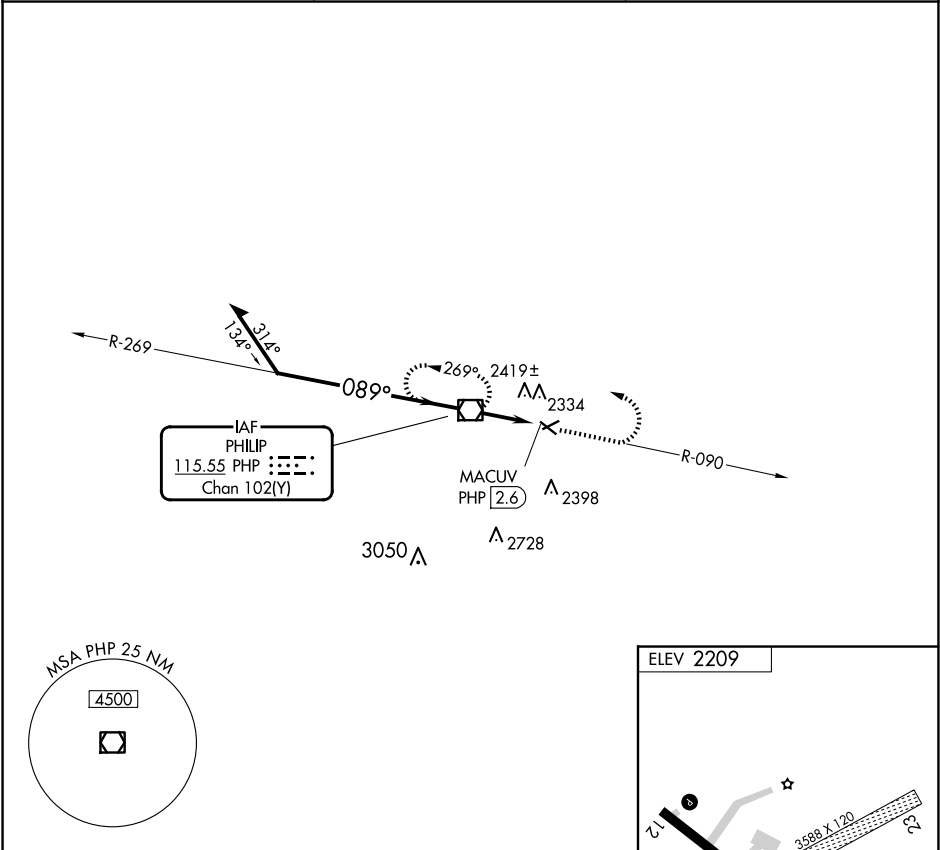
Rwy Idg
TDZE
Apt Elev
N/A
N/A
2209


VOR-A
PHILIP (PHP)

Circling to Rwy 12-30 NA at night. When local altimeter setting not received, use Pierre Rgnl altimeter setting and increase all MDA 220 feet, and increase Circling Cat C visibility ¾ mile.

MISSED APPROACH: Climb to 4500 on PHP VOR/DME R-090, then left turn direct PHP VOR/DME and hold.

| | | |
|------------------------|--------------------------------------|--|
| ASOS 118.375 | DENVER CENTER 127.95 338.2 | UNICOM 122.8 (CTAF) 0 |
|------------------------|--------------------------------------|--|



| CATEGORY | A | B | C | D | FAF to MAP 2.6 NM | | | | | |
|--|-------------|-------------|--------------|----|-------------------|------|------|------|------|------|
|  CIRCLING | 2720-1 | 2760-1 | 2840-1¾ | NA | Knots | 60 | 90 | 120 | 150 | 180 |
| | 511 (600-1) | 551 (600-1) | 631 (700-1¾) | | Min:Sec | 2:36 | 1:44 | 1:18 | 1:02 | 0:52 |

NC-1, 07 AUG 2025 to 04 SEP 2025

NC-1, 07 AUG 2025 to 04 SEP 2025