

WAAS CH <b>99335</b> <b>W30A</b>	APP CRS <b>301°</b>	Rwy Idg <b>3998</b> TDZE <b>2206</b> Apt Elev <b>2209</b>
--	------------------------	---

RNAV (GPS) RWY 30

PHILIP (PHP)

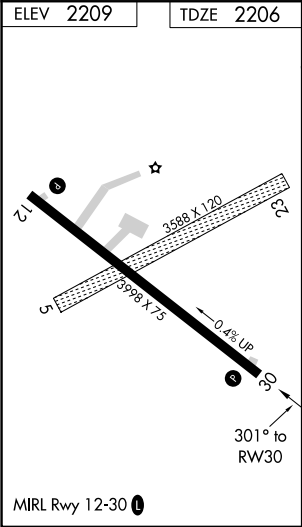
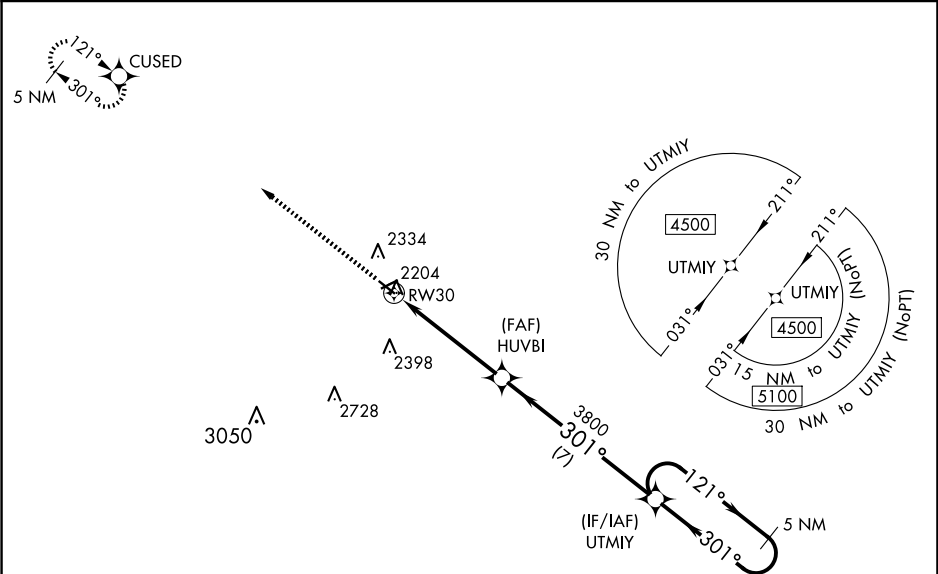
▼

⚠

DME/DME RNP-0.3 NA. When local altimeter setting not received, use Pierre altimeter setting and increase all DA 204 feet and MDA 220 feet and increase LPV all Cats visibility ½ mile, increase LNAV/VNAV all Cats visibility 1 mile, increase LNAV Cat C visibility ½ mile, and increase Circling Cat C visibility ¾ mile. Helicopter visibility reduction below 1 SM NA. Procedure NA at night. For uncompensated Baro-VNAV systems, LNAV/VNAV NA below -14°C (7°F) or above 54°C (130°F). Baro-VNAV NA when using Pierre altimeter setting.

MISSED APPROACH:  
Climb to 4500 direct  
CUSED and hold.

ASOS <b>118.375</b>	DENVER CENTER <b>127.95 338.2</b>	UNICOM <b>122.8 (CTAF) 0</b>
------------------------	--------------------------------------	---------------------------------



4500 CUSED		VGSI and RNAV glidepath not coincident (VGSI Angle 3.00/TCH 27).		UTMYY 5 NM Holding Pattern	
↑		HUVBI 3800		121° → 4500 ← 301°	
RW30		3800		GP 3.00° TCH 40	
4.9 NM		7 NM			
CATEGORY	A	B	C	D	
LPV DA	2456-1	250 (300-1)	2456-1 3/8 250 (300-1 3/8)	NA	
LNAV/VNAV DA	2794-2		588 (600-2)	NA	
LNAV MDA	2620-1	414 (500-1)	2620-1 1/4 414 (500-1 1/4)	NA	
CIRCLING	2720-1 511 (600-1)	2760-1 551 (600-1)	2840-1 3/4 631 (700-1 3/4)	NA	