

WAAS CH 42647 W12A	APP CRS 111°	Rwy Idg TDZE Apt Elev	4001 125 127
--	------------------------	-----------------------------	---

RNAV (GPS) RWY 12
DEWITT FLD/OLD TOWN MUNI (OLD)

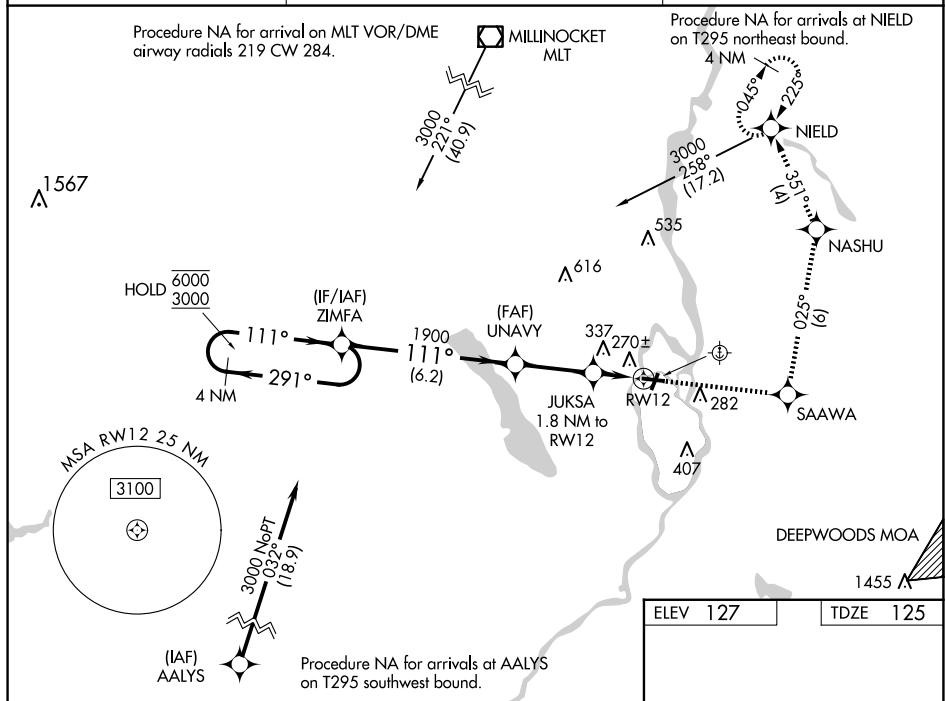
RNP APCH - GPS.

V Rwy 12 helicopter visibility reduction below $\frac{3}{4}$ SM NA. Circling NA to Rwy 17W and 35W. Circling Rwy 4 NA at night. Use BGR altimeter setting; when not received, use BHB altimeter setting and increase LPV DA to 497 feet; increase all MDAs 60 feet and LNAV visibility Cat C $\frac{1}{2}$ SM, and Circling visibility Cat C $\frac{1}{4}$ SM.

MISSED APPROACH: Climb to 3100 direct SAAWA and on track 025° to NASHU and on track 351° to NIELD and hold, continue climb-in-hold to 3100.

BGR ASOS
127.75

BANGOR APP CON
118.925 239.3

UNICOM
122.8 (CTAF) 

4 NM Holding Pattern

ZIMFA

3100

SAAWA

tr 025°

NASHU

tr 351°

NIELD

6000 ← 291°

3000 → 111°

UNAVY 1900

JUKSA 760

1.8 NM to RW12

RW12

GP 3.50° TCH 60

6.2 NM

2.8 NM

1.8 NM

CATEGORY	A	B	C	D
LPV DA	449-1 324 (400-1)			NA
LNAV MDA	560-1	435 (500-1)	560-1¼ 435 (500-1¼)	NA
C CIRCLING	640-1 513 (600-1)	700-1 573 (600-1)	760-1¾ 633 (700-1¾)	NA

