

VOR/DME HRL 113.65 Chan 83 (Y)	APP CRS 325°	Rwy Ldg TDZE Apt Elev	7257 36 36
--	------------------------	-----------------------------	---------------------------------------

VOR Z RWY 31
VALLEY INTL (HRL)

DME required.		<div>MALSR</div> <div><div><div><div></div></div><div><div></div></div></div><div><div></div><div></div><div></div><div></div><div></div></div></div>	<div>MISSED APPROACH: Climb to 1000 then climbing right turn to 2100 direct HRL VOR/DME and hold, continue climb and hold to 2100.</div>	
<div><div><div></div><div></div></div><div>VDP NA when using Port Isabel altimeter setting. When local altimeter setting not received, use Port Isabel altimeter setting and increase all MDAs 60 feet and S-31 visibility Cat C/D ½ SM, and Circling visibility Cat C/D ¼ SM. For inop ALS, increase S-31 Cats C/D visibilities to 1½ SM.</div></div>				
<div>ATIS</div> <div>124.85</div>	<div>VALLEY APP CON</div> <div>120.7 279.5</div>	<div>HARLINGEN TOWER ★</div> <div>119.3 (CTAF) 0 317.6</div>	<div>GND CON</div> <div>121.7</div>	<div>UNICOM</div> <div>122.95</div>

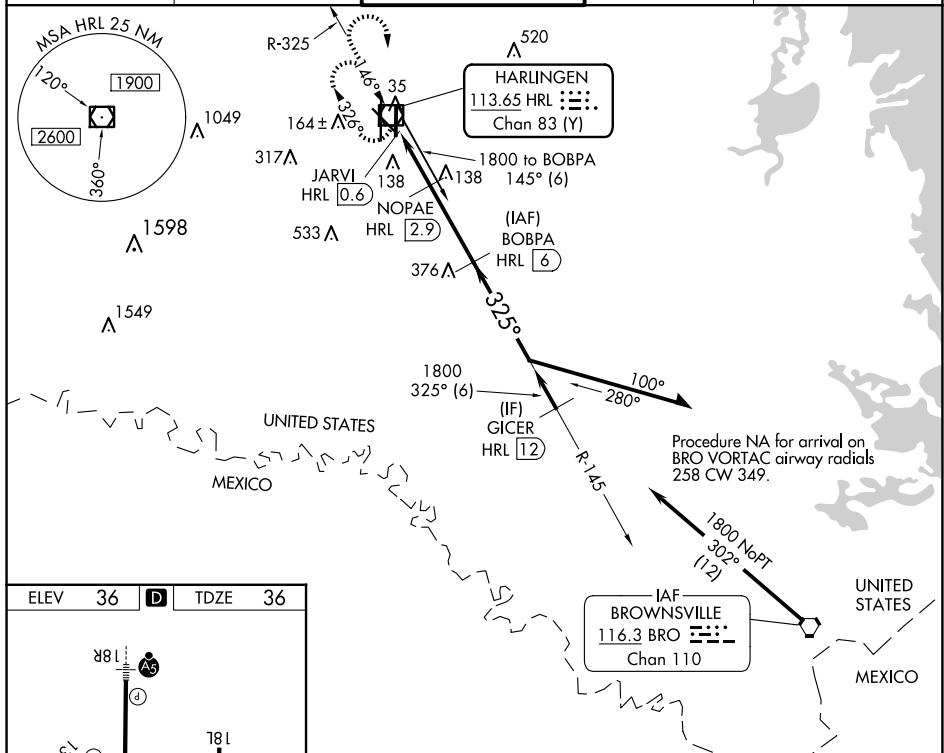


Figure 1 illustrates a portion of an enroute chart. The left side shows a vertical line representing a latitude line, with various navigation aids and distances marked. The right side shows a detailed segment of a flight path with altitude, heading, and distance information.

Left Side (Chart Portion):

- Vertical line with distances: 9400 X 150, 7297 X 150, 5950 X 150.
- Navigation aids: TWR, A5, 36L, 36R, 325°.
- Distances: 150, 150, 150.

Right Side (Flight Path Segment):

- Altitude and Heading:** 1000, 2100, HRL, BOBPA HRL (6), 145°, 1800, 325°, 1800.
- Distances:** 1 NM, 1.2 NM, 3.1 NM.
- Altitude and Heading:** 800, 3.00°, TCH 55.
- Navigation Aids:** JARVI HRL (0.6), HRL (1.7), NOFAE HRL (2.9).
- Instructions:** Remain within 10 NM.

Table:

CATEGORY	A	B	C	D
S-31	420-1/2 384 (400-1/2)		420-3/4 384 (400-3/4)	
C CIRCLING	460-1 424 (500-1)	560-1 524 (600-1)	600-1 1/2 564 (600-1 1/2)	680-2 644 (700-2)