

VOR/DME HRL <b>113.65</b> Chan <b>83</b> (Y)	APP CRS <b>160°</b>	Rwy Ldg TDZE Apt Elev	<b>9400</b> <b>35</b> <b>36</b>
----------------------------------------------------	------------------------	-----------------------------	---------------------------------------

VOR RWY 18R  
VALLEY INTL (HRL)

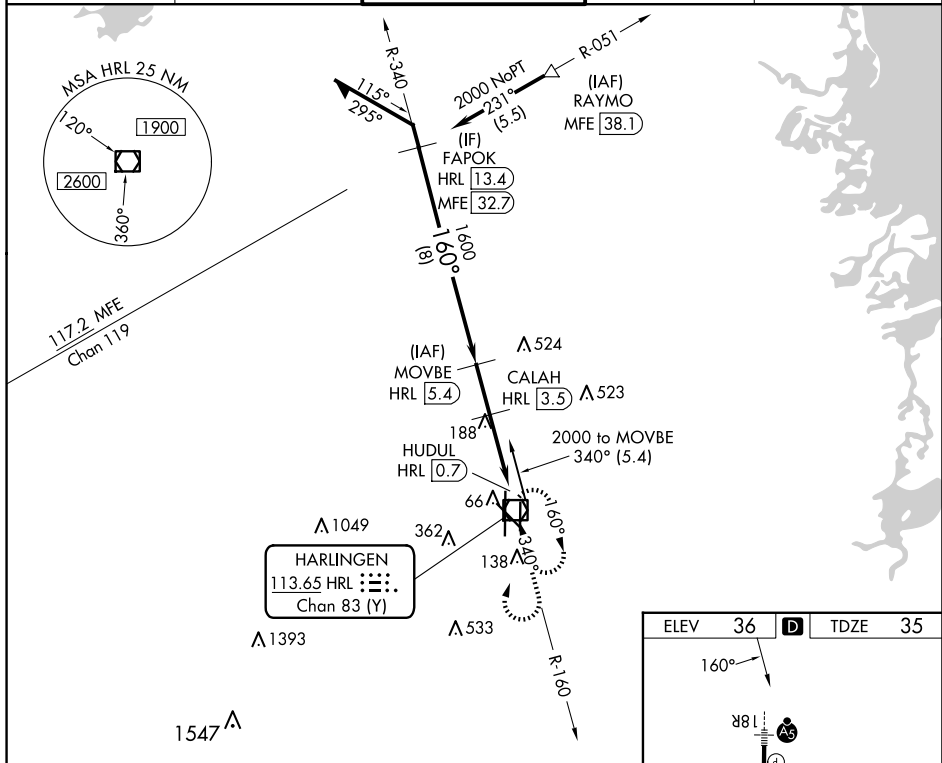
DME required.

**T** For inop ALS, increase S-18R Cat C/D visibility to 1½ SM. When local altimeter setting not received, use Port Isabel altimeter setting and increase all MDAs 60 feet and S-18R visibility Cat C/D to RVR 5500 and Circling visibility Cat C/D ¼ SM. VPD NA when using Port Isabel altimeter setting.

MALSR

**MISSED APPROACH:** Climb to 1200 then climbing right turn to 2000 direct HRL VOR/DME and hold, continue to climb in hold to 2000.

ATIS <b>124.85</b>	VALLEY APP CON <b>120.7 279.5</b>	HARLINGEN TOWER ★ <b>119.3(CTAF) 0 317.6</b>	GND CON <b>121.7</b>	UNICOM <b>122.95</b>
-----------------------	--------------------------------------	-------------------------------------------------	-------------------------	-------------------------



VLSI and descent angles not coincident (VLSI Angle 3.00/TCH 71).

Remain within 10 NM

2000

340°

160°

1600

1000

3.05°

TCH 55

1200

2000

HRL

1.9 NM

1.7 NM


1.1 NM

CALAH HRL 3.5

HRL 1.8

HUDUL HRL 0.7

MOVBE HRL 5.4

CATEGORY	A	B	C	D
S-18R	440/24 405 (500-½)		440/40 405 (500-¾)	
 CIRCLING	460-1 424 (500-1)	560-1 524 (600-1)	600-1½ 564 (600-1½)	680-2 644 (700-2)

