

VOR/DME HRL <u>113.65</u> Chan 83 (Y)	APP CRS 189°	Rwy Ldg 5949 TDZE 34 Apt Elev 36
---	------------------------	---

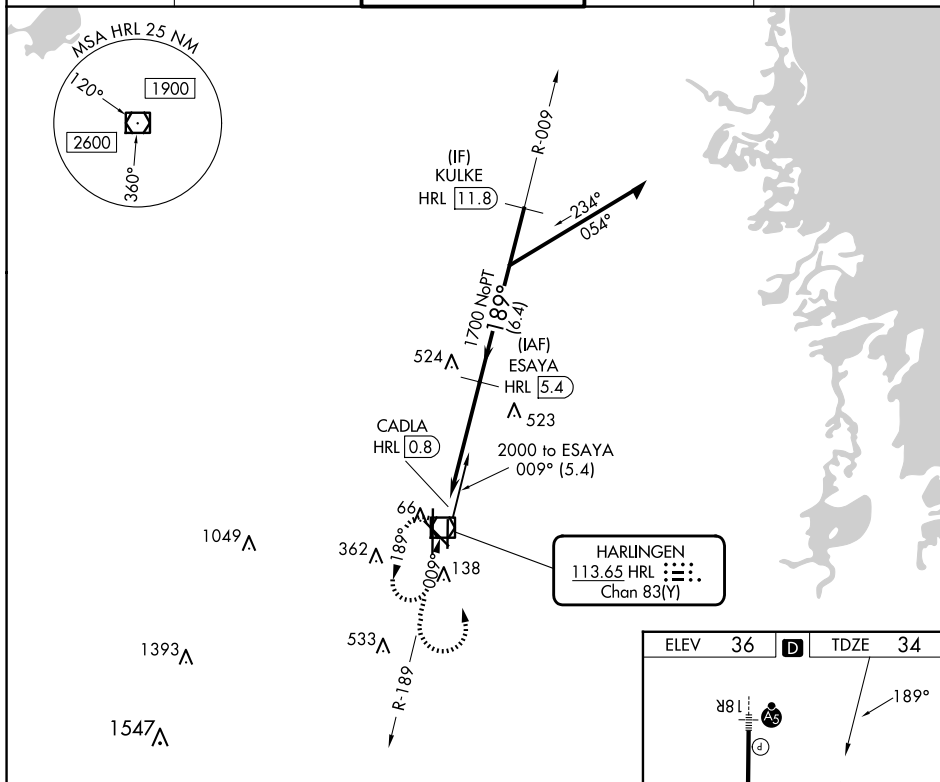
VOR RWY 18L
VALLEY INTL (HRL)

DME required. RADAR required for procedure entry at KULKE.

T VDP NA when using Port Isabel altimeter setting. When local altimeter
A setting not received, use Port Isabel altimeter setting and increase all
MDAs 60 feet and Circling visibility Cats C and D $\frac{1}{4}$ SM.

MISSED APPROACH: Climb to 2100 then left turn direct HRL VOR/DME and hold.

ATIS 124.85	VALLEY APP CON 120.7 279.5	HARLINGEN TOWER ★ 119.3 (CTAF) 0 317.6	GND CON 121.7	UNICOM 122.95
-----------------------	--------------------------------------	--	-------------------------	-------------------------



CATEGORY	A	B	C	D
S-18L	480-1	446 (500-1)	480-1 $\frac{3}{8}$	446 (500-1 $\frac{3}{8}$)
C CIRCLING	480-1 444 (500-1)	560-1 524 (600-1)	600-1 $\frac{1}{2}$ 564 (600-1 $\frac{1}{2}$)	680-2 644 (700-2)

MIRL Rwy 18L-36R
REIL Rwys 13 and 18L
HIRL Rwys 13-31 and 18R-36L