

WAAS CH <b>50131</b> <b>W18A</b>	APP CRS <b>178°</b>	Rwy Ldg <b>9400</b> TDZE <b>35</b> Apt Elev <b>36</b>
--	------------------------	---

RNAV (GPS) Y RWY 18R

VALLEY INTL (HRL)

RNP APCH - GPS.

▼

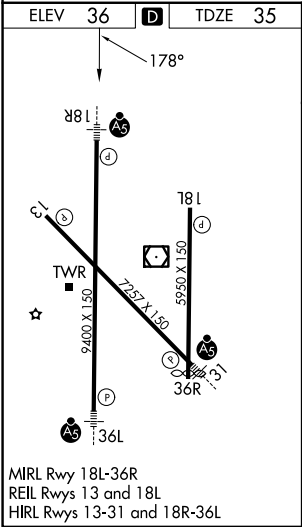
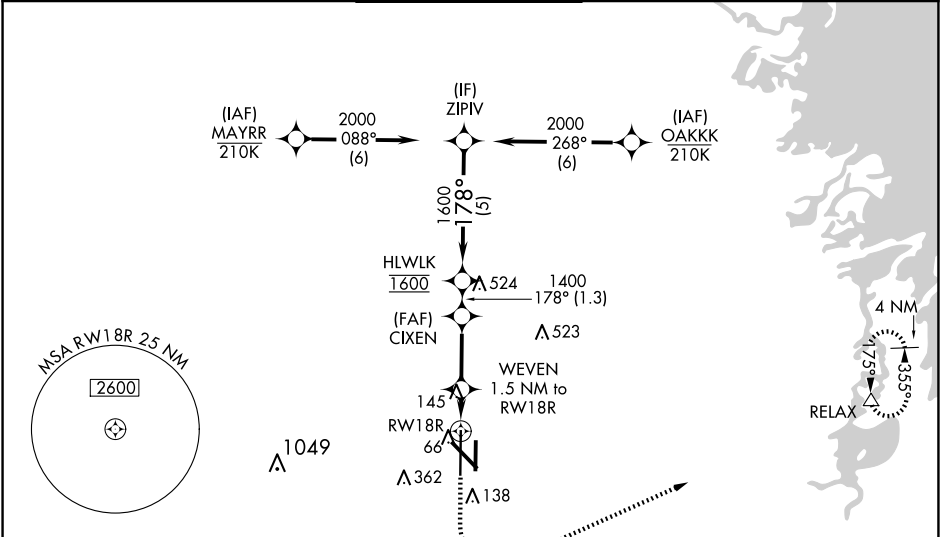
▲

For uncompensated Baro-VNAV systems, LNAV/VNAV NA below -1°C or above 54°C. For inop ALS, increase LNAV/VNAV all Cats visibility to RVR 4000, LNAV Cats C and D visibility to RVR 5500. When local altimeter setting not received, use Port Isabel altimeter setting and increase LPV DA to 277 feet; increase LNAV/VNAV DA to 327 feet; increase all MDAs 60 feet and LNAV visibility Cat C/D to RVR 4000 and Circling visibility Cat C/D ¼ SM. For inop ALS when using Port Isabel altimeter setting, increase LNAV/VNAV all Cats visibility to RVR 4500. Baro-VNAV and VDP NA when using Port Isabel altimeter setting.  
\* RVR 1800 authorized with use of FD or AP or HUD to DA, (NA when using Port Isabel altimeter setting).

MALSR

MISSED APPROACH:  
Climb to 500 then climbing left turn to 2000 direct RELAX and hold

ATIS <b>124.85</b>	VALLEY APP CON <b>120.7 279.5</b>	HARLINGEN TOWER★ <b>119.3 (CTAF) 0 317.6</b>	GND CON <b>121.7</b>	UNICOM <b>122.95</b>
-----------------------	--------------------------------------	---	-------------------------	-------------------------



500	2000	RELAX	VGSI and RNAV glidepath not coincident (VGSI Angle 3.00/TCH 71)			
See planview for multiple IF locations.				HLWLK		
RW18R				CIXEN		
0.9 NM to RW18R				1400		
0.6 NM				178°		
2.6 NM				1600		
1.3 NM				GP 3.00° TCH 55		
CATEGORY	A	B	C	D		
LPV DA *	235/24		200 (200-½)			
LNAV/VNAV DA	285/24		250 (300-½)			
LNAV MDA	400/24		365 (400-½)		400/35 365 (400-¾)	
CIRCLING	460-1		560-1		600-1½	
	424 (500-1)		524 (600-1)		564 (600-1½)	
					680-2	
					644 (700-2)	