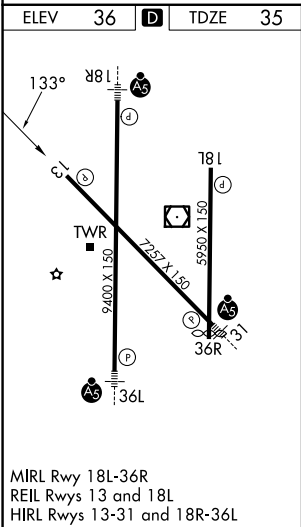
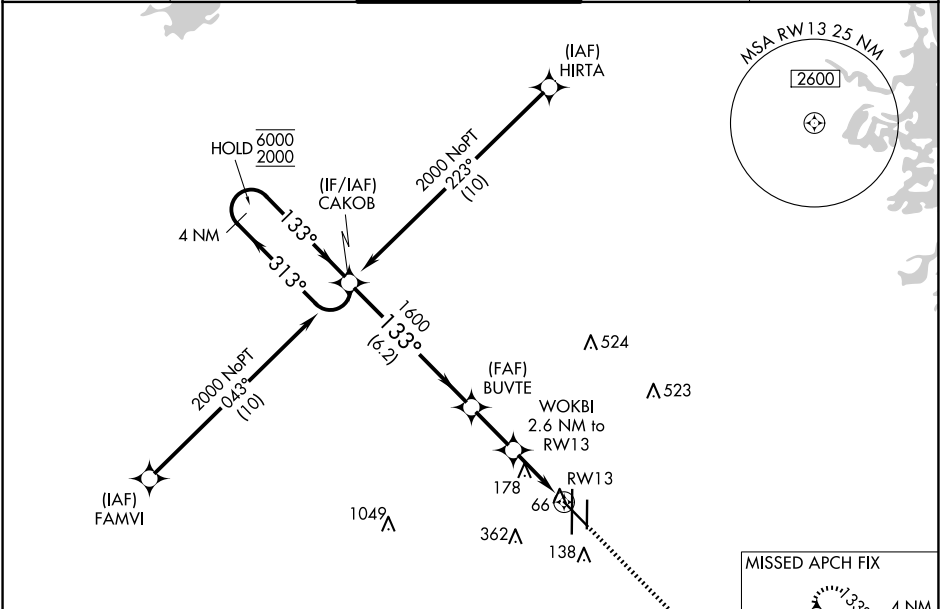


RNP APCH - GPS.

Baro-VNAV and VDP NA when using Port Isabel altimeter setting. For uncompensated Baro-VNAV systems, LNAV/VNAV NA below -1°C or above 54°C. When local altimeter setting not received, use Port Isabel altimeter setting: increase LPV DA to 327 feet and all visibilities ¼ SM; increase LNAV/VNAV DA to 327 feet and all visibilities ¼ SM; increase all MDAs 60 feet and visibility Cats C and D ¼ SM.

MISSED APPROACH: Climb to 2000 direct AMAPE and hold.

ATIS 124.85	VALLEY APP CON 120.7 279.5	HARLINGEN TOWER ★ 119.3 (CTAF) 0 317.6	GND CON 121.7	UNICOM 122.95
----------------	-------------------------------	---	------------------	------------------



4 NM Holding Pattern				
CAKOB				
6000 ← 313° 2000 → 133°				
GP 3.00° TCH 59				
BUVTE 1600 WOKBI 2.6 NM to RWY 13 1.1 NM to RWY 13				
6.2 NM 2.1 NM 1.5 NM 1.1				
CATEGORY	A	B	C	D
LPV DA	285-¾ 250 (300-¾)			
LNAV/VNAV DA	285-¾ 250 (300-¾)			
LNAV MDA	440-1 405 (500-1)		440-1½ 405 (500-1½)	
CIRCLING	460-1 424 (500-1)	560-1 524 (600-1)	600-1½ 564 (600-1½)	680-2 644 (700-2)