

APP CRS  
**313°**

Rwy Ldg  
TDZE  
Apt Elev  
**36**  
**36**

**RNAV (RNP) Z RWY 31**  
VALLEY INTL (HRL)

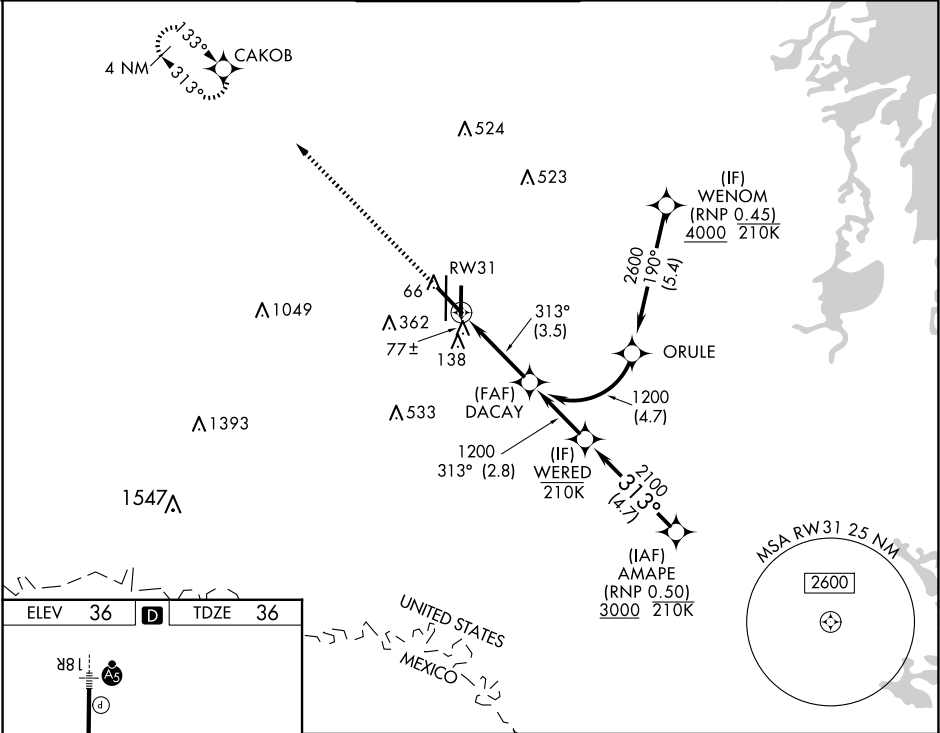
**RNP AR APCH - GPS.**

▼ For uncompensated Baro-VNAV systems, procedure NA below -1°C or above 54°C. For inop ALS, increase RNP 0.11 all Cats visibilities to ¾ SM and increase RNP 0.30 all Cats visibilities ⅞ SM. When local altimeter setting not received, procedure NA.

MALSR  
A5

MISSED APPROACH:  
Climb to 2000 direct  
CAKOB and hold.

ATIS <b>124.85</b>	VALLEY APP CON <b>120.7 279.5</b>	HARLINGEN TOWER ★ <b>119.3(CTAF) 317.6</b>	GND CON <b>121.7</b>	UNICOM <b>122.95</b>
-----------------------	--------------------------------------	-----------------------------------------------	-------------------------	-------------------------



ELEV 36 D TDZE 36

MIRL Rwy 18L-36R  
REIL Rwys 13 and 18L  
HIRL Rwys 13-31 and 18R-36L

2000 CAKOB

See Planview for multiple IF locations.

DACAY 1200

GP 3.00°  
TCH 55

CATEGORY	A	B	C	D
RNP 0.11 DA		286-½	250 (300-½)	
RNP 0.30 DA		339-½	303 (400-½)	

**AUTHORIZATION REQUIRED**

SC-3, 07 AUG 2025 to 04 SEP 2025

SC-3, 07 AUG 2025 to 04 SEP 2025