

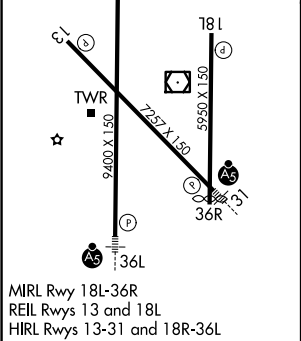
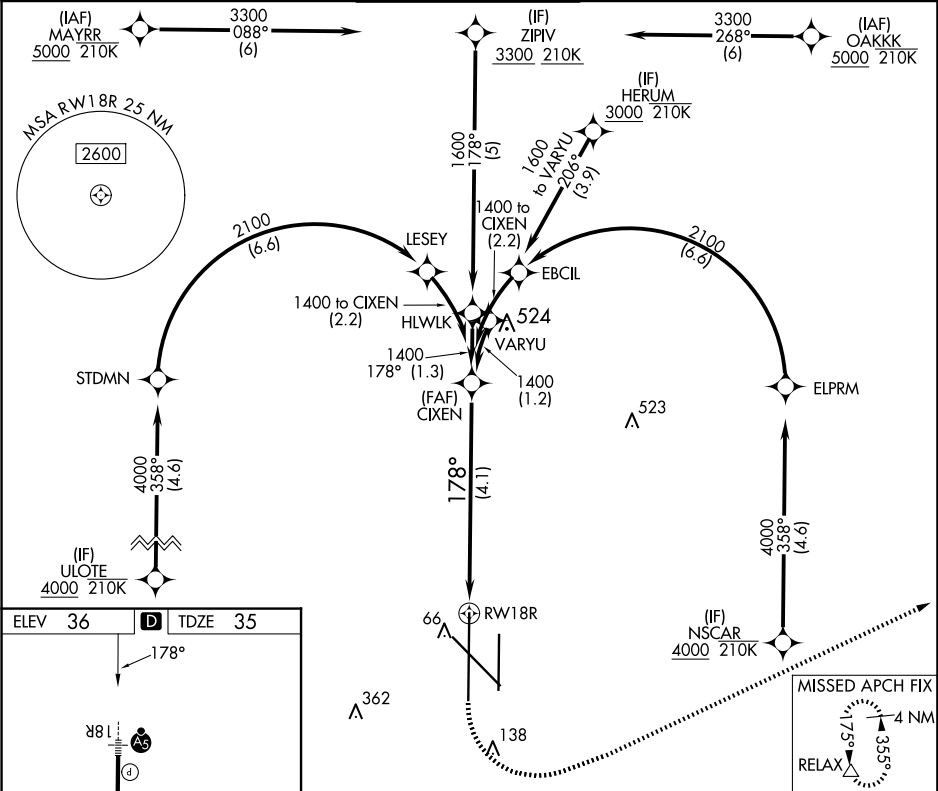
APP CRS	Rwy Ldg	9400
178°	TDZE	35
	Apt Elev	36

RNAV (RNP) Z RWY 18R

VALLEY INTL (HRL)

RNP AR APCH - GPS.	MALSR	MISSED APPROACH: Climb to 500 then climbing left turn to 2000 direct RELAX and hold.
▼ For uncompensated Baro-VNAV systems, procedure NA below -1°C or above 54°C. When local altimeter setting not received, procedure NA. For inop ALS, increase RNP 0.11 all Cats visibility to RVR 4000 and RNP 0.30 all Cats visibility to RVR 4500.		

ATIS	VALLEY APP CON	HARLINGEN TOWER★	GND CON	UNICOM
124.85	120.7 279.5	119.3(CTAF) 0 317.6	121.7	122.95



500	2000	RELAX	VGSI and RNAV glidepath not coincident (VGSI Angle 3.00/TCH 71)	CIXEN 1400
RW18R				
See planview for multiple IF locations.				
4.1 NM				
CATEGORY	A	B	C	D
RNP 0.11 DA	285/24		250 (300-½)	
RNP 0.30 DA	345/24		310 (400-½)	
AUTHORIZATION REQUIRED				