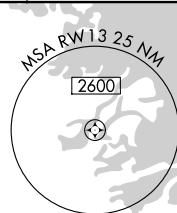
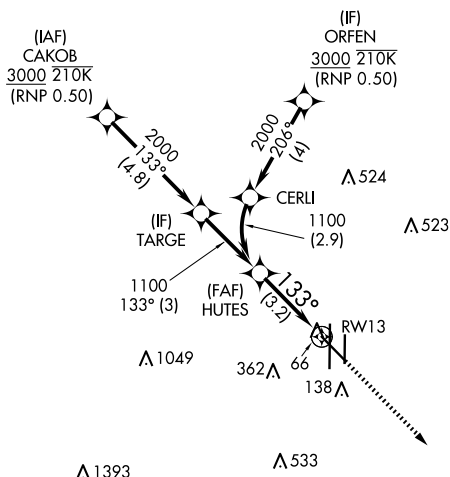


RNAV (RNP) Z RWY 13
VALLEY INTL (HRL)

T For uncompensated Baro-VNAV systems, procedure NA below -1°C or above 54°C. When local altimeter setting not received, procedure NA.

MISSED APPROACH: Climb to 2000 direct AMAPE and hold.

UNICOM
122.95

MIRL Rwy 18L-36R
REIL Rwy 13 and 18L
HIRL Rwy 13-31 and 18R-36L

UNITED STATES
MEXICO

Diagram illustrating the IF location for RW13. The diagram shows a vertical line for HUTES at 1100. A line extends from HUTES at 1100 to RW13 at a bearing of 133°. The distance is 3.2 NM. A dashed line indicates a 3.00° GP and TCH 59. A planview reference is shown in the top right corner.

CATEGORY	A	B	C	D
RNP 0.15 DA		285- $\frac{3}{4}$	250 (300- $\frac{3}{4}$)	
RNP 0.30 DA		342- $\frac{7}{8}$	307 (400- $\frac{7}{8}$)	

AUTHORIZATION REQUIRED