

WAAS CH 72830 W36A	APP CRS 358°	Rwy Ldg TDZE Apt Elev	5759 36 36
--	------------------------	-----------------------------	---------------------------------------

RNAV (GPS) RWY 36R

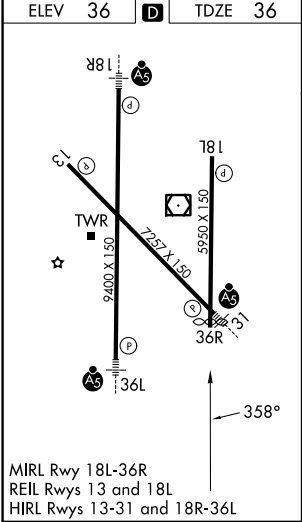
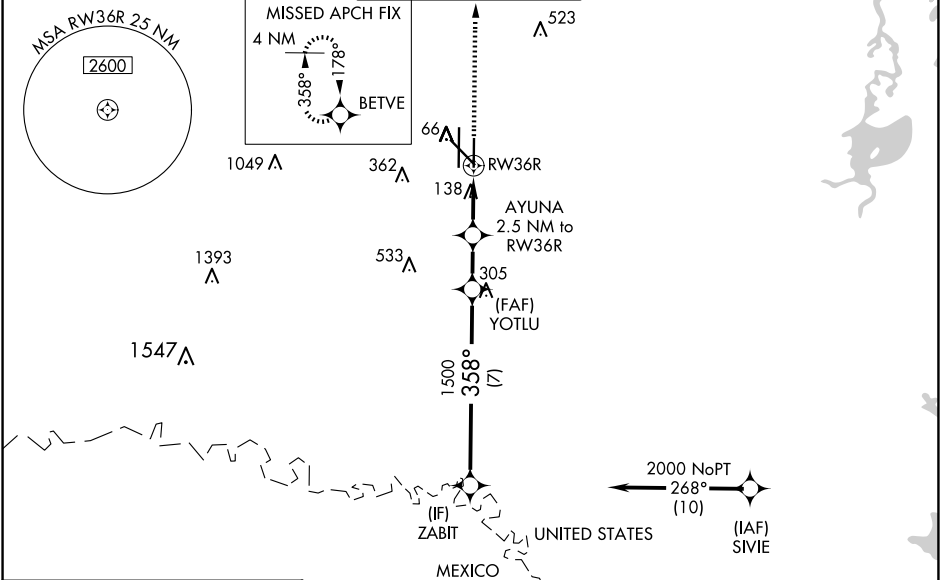
VALLEY INTL (HRL)

RNP APCH - GPS.

For uncompensated Baro-VNAV systems, LNAV/VNAV NA below -1°C or above 54°C.
Baro-VNAV and VDP NA when using Port Isabel altimeter setting. When local altimeter setting not received, use Port Isabel altimeter setting: increase LPV DA to 278 feet; increase LNAV/VNAV DA to 328 feet and all visibilities $\frac{1}{8}$ SM, increase all MDAs 60 feet and LNAV visibility Cat C and D $\frac{1}{8}$ SM, and Circling visibility Cats C and D $\frac{1}{4}$ SM.

MISSED APPROACH:
Climb to 2000 direct BETVE and hold.

ATIS 124.85	VALLEY APP CON 120.7 279.5	HARLINGEN TOWER ★ 119.3 (CTAF) L 317.6	GND CON 121.7	UNICOM 122.95
-----------------------	--------------------------------------	--	-------------------------	-------------------------



2000	BETVE	AYUNA 2.5 NM to RW36R	YOTLU 1500	ZABIT	2000
		1 NM to RW36R			
		880	1500		GP 3.00° TCH 55
		1 NM	1.5 NM	2 NM	7 NM
CATEGORY	A	B	C	D	
LPV DA		236- $\frac{3}{4}$	200 (200- $\frac{3}{4}$)		
LNAV/VNAV DA		286- $\frac{3}{4}$	250 (300- $\frac{3}{4}$)		
LNAV MDA		400-1	364 (400-1)		
CIRCLING	460-1 424 (500-1)	560-1 524 (600-1)	600-1 $\frac{1}{2}$ 564 (600-1 $\frac{1}{2}$)	680-2 644 (700-2)	

SC-3, 07 AUG 2025 to 04 SEP 2025

SC-3, 07 AUG 2025 to 04 SEP 2025