

WAAS CH 82008 W28A	APP CRS 280°	Rwy Idg 8003 TDZE 196 Apt Elev 201
--	------------------------	---

RNAV (GPS) RWY 28

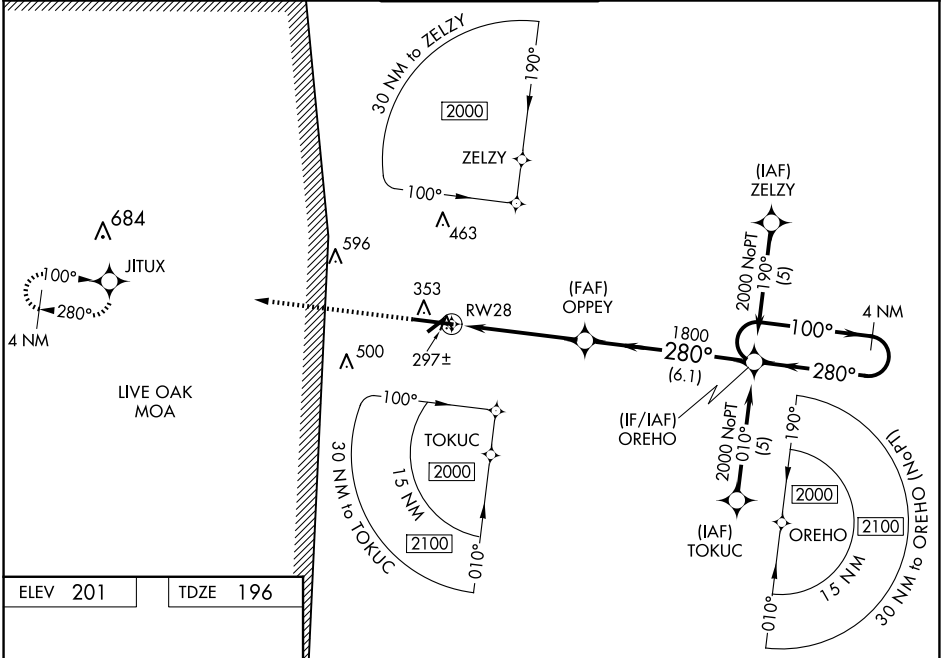
LAKE CITY GATEWAY (LCQ)

RNP APCH-GPS.

▼ Baro-VNAV and VDP NA when using Gainesville altimeter setting. For uncompensated Baro-VNAV systems, LNAV/VNAV NA below -18°C or above 54°C. When local altimeter setting not received, use Gainesville altimeter setting: Increase LPV DA to 624 feet and all visibility ¼ SM; LNAV/VNAV DA to 640 feet and all visibility ¾ SM; increase all MDAs 100 feet and LNAV visibility Cat C and D ¼ SM and Circling visibility Cat C ½ SM and Circling Cat D ¼ SM. Circling Rwy 10 NA at night. Rwy 13 helicopter visibility reduction below ¾ SM NA.

MISSED APPROACH:
Climb to 2000 direct
JITUX and hold.

AWOS-3 120.675	JACKSONVILLE CENTER 125.375 254.325	LAKE CITY TOWER ★ 119.2 (CTAF) 0 314.6	GND CON 121.9	UNICOM 122.95
--------------------------	---	--	-------------------------	-------------------------



ELEV 201	TDZE 196
----------	----------

2000 ↑ JITUX

*LNAV only.

OPPEY 1800

OREHO 4 NM Holding Pattern

RW28 1.2 NM to RW28

GP 3.00° TCH 55

1.2 NM	3.6 NM	6.1 NM		
CATEGORY	A	B	C	D
LPV DA	540-1 344 (400-1)			
LNAV/VNAV DA	556-1 360 (400-1)			
LNAV MDA	640-1 444 (500-1)		640-1 ¾ 444 (500-1 ¾)	
CIRCLING	760-1 559 (600-1)		780-1 ½ 759 (600-1 ½) 960-2 ½ 759 (600-2 ½)	

REIL Rws 10 and 28 0
MIRL Rws 5-23 and 10-28 0