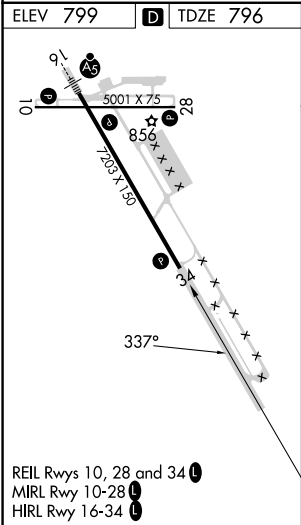
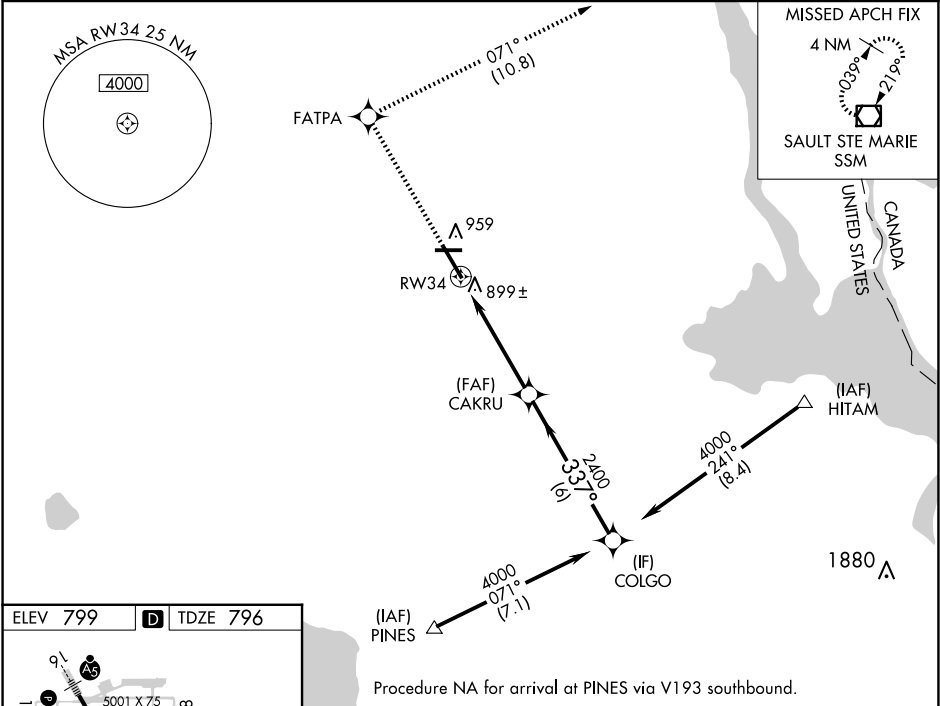


WAAS CH <b>56315</b> <b>W34A</b>	APP CRS <b>337°</b>	Rwy Idg <b>7203</b> TDZE <b>796</b> Apt Elev <b>799</b>
--	------------------------	---

RNAV (GPS) RWY 34  
CHIPPEWA COUNTY INTL (CIU)

RNP APCH. ▼ For uncompensated Baro-VNAV systems, LNAV/VNAV NA below -16°C or above 54°C. ▲ When local altimeter setting not received, use Sault Ste Marie Muni/Sanderson Fld altimeter setting; increase LPV DA to 1091 feet, LNAV/VNAV DA to 1243 feet and all MDA 60 feet; increase LNAV Cat D visibility ¼ SM. Baro-VNAV and VDP NA when using Sault Ste Marie Muni/Sanderson Fld altimeter setting.		MISSED APPROACH: Climb to 3000 direct FATPA and track 071° to SSM VOR/DME and hold.
AWOS-3PT <b>127.575</b>	TORONTO CENTER <b>132.65 344.5</b>	UNICOM <b>123.0 (CTAF) 0</b>



COLGO				3000	FATPA	tr 071°	SSM
4000				2400			
GP 3.00° TCH 40				2400			
				6 NM	3.7 NM	1.2 NM	
CATEGORY	A	B	C	D			
LPV DA	1046-1			250 (300-1)			
LNAV/DA VNAV	1198-1½			402 (400-1½)			
LNAV MDA	1200-1	404 (500-1)	1200-1¼	404 (500-1¼)			
CIRCLING	1260-1	461 (500-1)	1260-1½	1360-2	461 (500-1½)	561 (600-2)	