

WAAS CH <b>69215</b> <b>W16A</b>	APP CRS <b>157°</b>	Rwy Idg TDZE <b>799</b> Apt Elev <b>799</b>
--	------------------------	---

RNAV (GPS) RWY 16

CHIPPEWA COUNTY INTL (CIU)

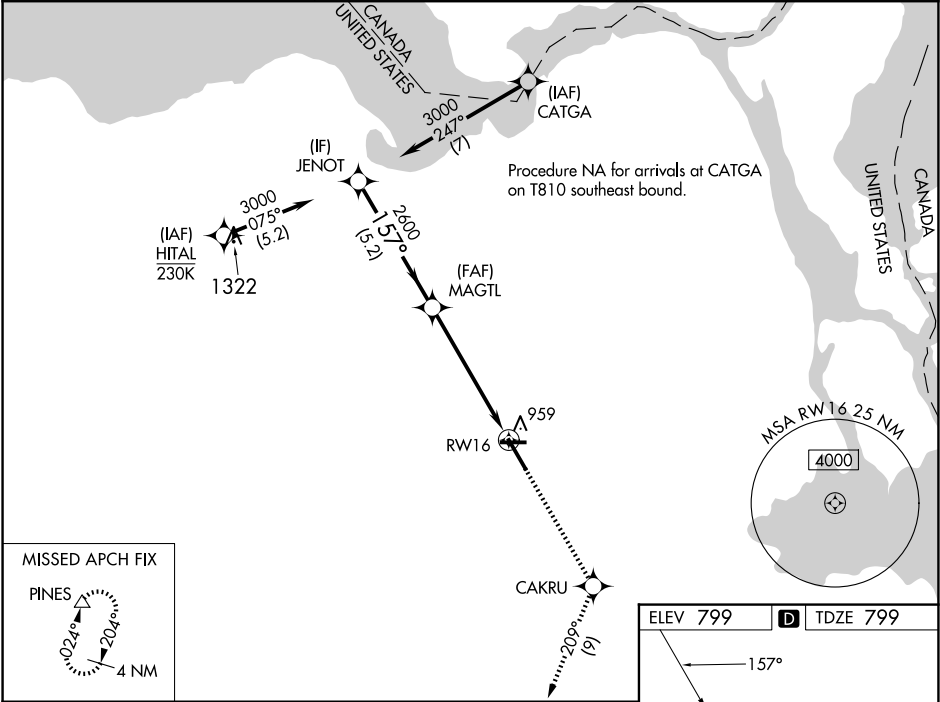
RNP APCH - GPS.

For uncompensated Baro-VNAV systems, LNAV/VNAV NA below -16°C or above 54°C.  
For inop ALS, increase LNAV/VNAV all Cats visibility to 1 SM.

MALSR

MISSED APPROACH: Climb to 3000 direct CAKRU and on track 209° to PINES and hold.

AWOS-3PT <b>127.575</b>	TORONTO CENTER <b>132.65 344.5</b>	UNICOM <b>123.0 (CTAF) 0</b>
----------------------------	---------------------------------------	---------------------------------



JENOT		MAGTL		CAKRU	tr 209°	PINES
3000		2600		1.1 NM to RWY 16		
GP 3.00° TCH 58		5.2 NM		4.3 NM		
CATEGORY	A	B	C	D		
LPV DA	999-1/2		200 (200-1/2)			
LNAV/VNAV DA	1140-5/8		341 (400-5/8)			
LNAV MDA	1220-1/2 421 (500-1/2)		1220-3/4 421 (500-3/4)			
CIRCLING	1260-1 461 (500-1)		1260-1 1/2 461 (500-1 1/2)		1360-2 561 (600-2)	

