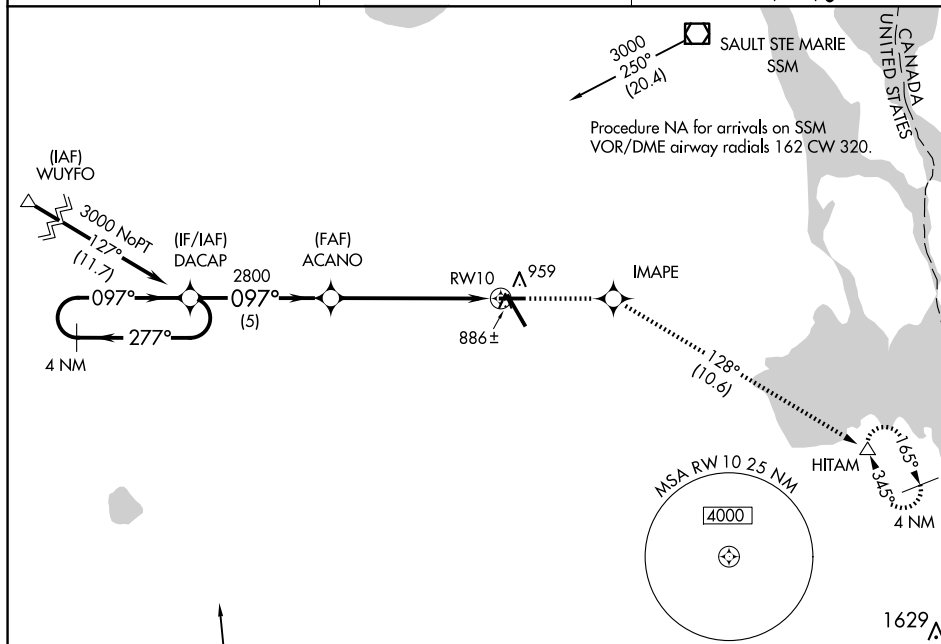


RNAV (GPS) RWY 10
CHIPPEWA COUNTY INTL (CIU)

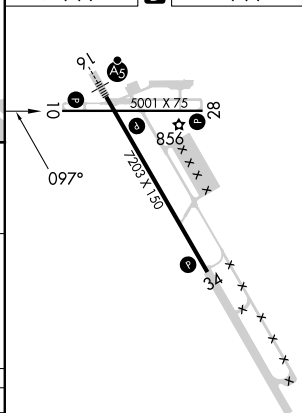
T VDP NA with Sault Ste Marie altimeter setting. When local altimeter setting
A not received, use Sault Ste Marie Muni/Sanderson Fld altimeter setting; increase
 all MDA 60 feet, increase LNAV visibility Cat C/D and Circling Cat C ¼ SM.

MISSED APPROACH: Climb to 2900 direct IMAPE and track 128° to HITAM and hold.

AWOS-3PT 127.575	TORONTO CENTER 132.65 344.5	UNICOM 123.0 (CTAF) 1
----------------------------	---------------------------------------	--



ELEV 799	D	TDZE 799
----------	----------	----------



CATEGORY	A	B	C	D
LNAV MDA	1320-1	521 (600-1)	1320-1½	521 (600-1½)
C CIRCLING	1320-1	521 (600-1)	1320-1½ 521 (600-1½)	1360-2 561 (600-2)

REIL Rwy 10, 28 and 34 **L**
MIRL Rwy 10-28 **L**
HIRL Rwy 16-34 **L**

EC-1, 07 AUG 2025 to 04 SEP 2025