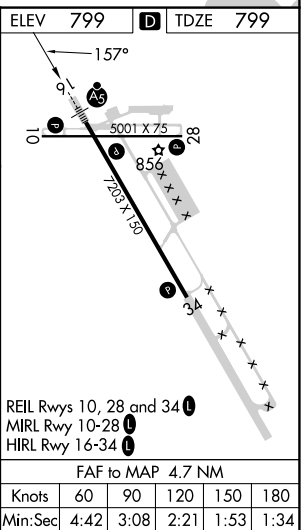
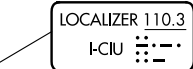



ILS or LOC RWY 16

MISSED APPROACH: Climb to 1500 then climbing right turn to 2600 direct KOLOE LOM/INT and hold, continue climb-in-hold to 2600.

UNICOM
123.0 (CTAF) **L**

LOC unusable from 0.6 NM inbound.
Glideslope unusable below 1090 feet.

CATEGORY	A	B	C	D	E
S-ILS 16	1090-½ 291 (300-½)				
S-LOC 16	1160-½	361 (400-½)	1160-⅝	361 (400-⅝)	
 CIRCLING	1260-1	461 (500-1)	1260-1½ 461 (500-1½)	1360-2 561 (600-2)	1380-2 581 (600-2)

CHIPPEWA COUNTY INTL (CIU)
ILS or LOC RWY 16