

WAAS CH 78101 W16A	APP CRS 160°	Rwy Idg TDZE Apt Elev	7000 682 682
--	------------------------	-----------------------------	---

RNAV (GPS) RWY 16

DRAUGHON-MILLER CENTRAL TEXAS RGNL (TPL)

RNP APCH - GPS.

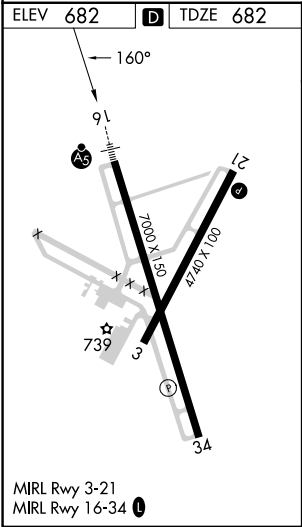
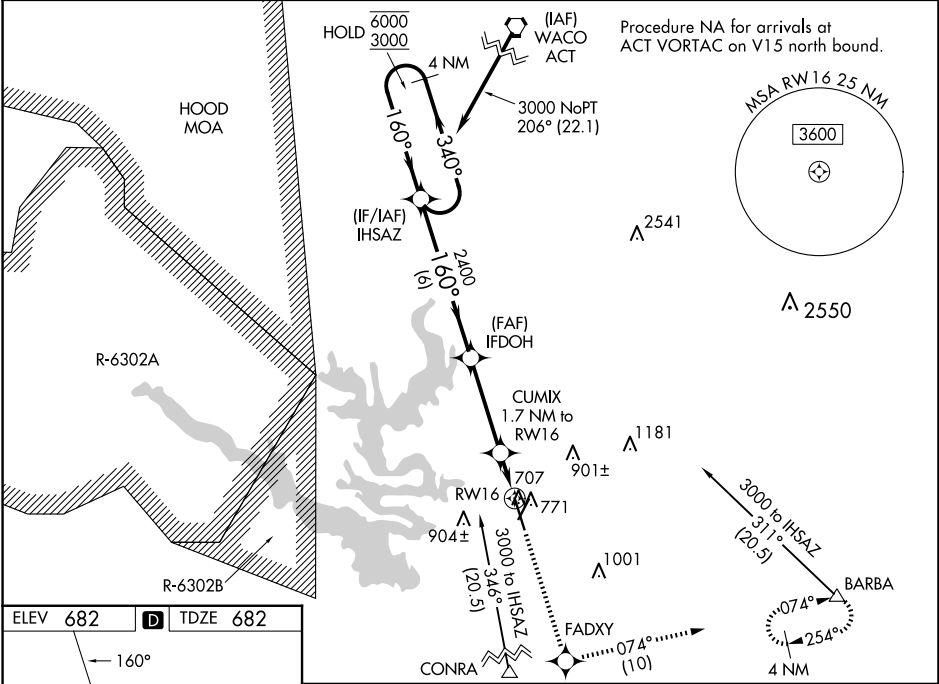
⚠

For uncompensated Baro-VNAV systems, LNAV/VNAV NA below -16°C or above 54°C. For inop ALS, increase LNAV/VNAV all Cats visibility to ¾ SM and LNAV Cats C/D visibility to ⅞ SM.

MALSR

MISSED APPROACH: Climb to 3600 direct FADXY and on track 074° to BARBA and hold, continue climb-in-hold to 3600.

AWOS-3PT 134.975	GRAY APP CON 120.075 370.0	CLNC DEL 125.9	UNICOM 123.0 (CTAF) 0
----------------------------	--------------------------------------	--------------------------	--



<div>4 NM Holding Pattern</div> <div>6000 ← 340°</div> <div>3000 → 160°</div> <div>GP 3.00° TCH 45</div>				<div>IHSAZ</div> <div>IFDOH</div> <div>2400</div> <div>2400</div> <div>1260</div> <div>6 NM</div> <div>3.6 NM</div> <div>1 NM</div> <div>0.7</div>	<div>3600</div> <div>FADXY</div> <div>tr 074°</div> <div>BARBA</div> <div>CUMIX</div> <div>1.7 NM to RW16</div> <div>0.7 NM to RW16</div> <div>RW16</div>	
CATEGORY	A	B	C	D		
LPV DA	882-1/2 200 (200-1/2)					
LNAV/VNAV DA	932-1/2 250 (300-1/2)					
LNAV MDA	960-1/2 278 (300-1/2)					
CIRCLING	1140-1 458 (500-1)	1200-1 518 (600-1)	1280-1 1/2 598 (600-1 1/2)	1420-2 1/4 738 (800-2 1/4)		