

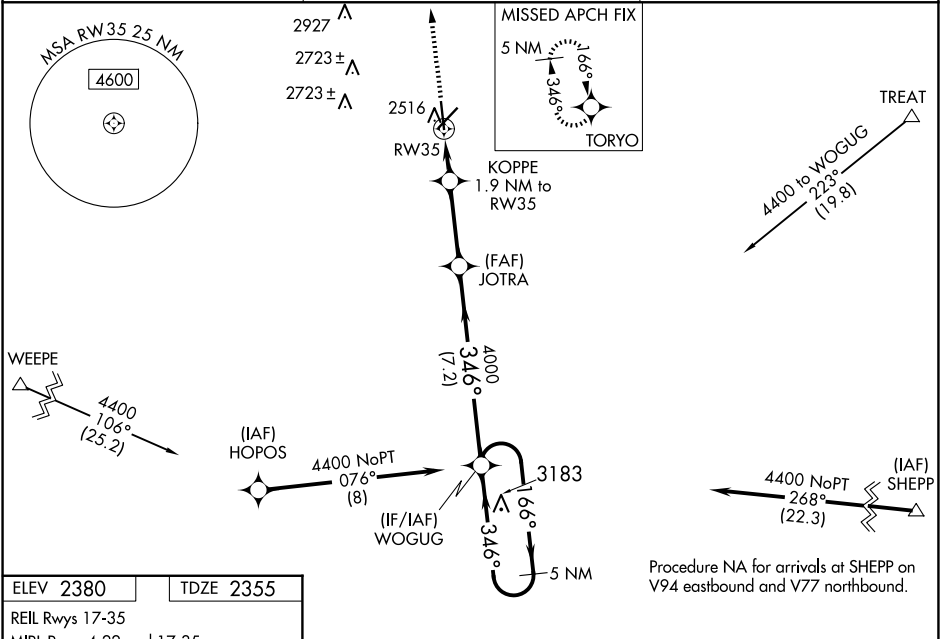
WAAS CH <b>78225</b> <b>W35A</b>	APP CRS <b>346°</b>	Rwy Idg <b>5840</b> TDZE <b>2355</b> Apt Elev <b>2380</b>
--	------------------------	---

RNAV (GPS) RWY 35  
AVENGER FLD (SWW)

**⚠** When VGSI inop, Circling Rwy 17 and 22 NA at night. Baro-VNAV NA when using Snyder altimeter setting. For uncompensated Baro-VNAV systems, LNAV/VNAV NA below -19°C (-2°F) or above 29°C (84°F). When VGSI inop, Straight-in/Circling Rwy 35 NA at night. DME/DME RNP-0.3 NA. Visibility reduction by helicopters NA. When local altimeter setting not received, use Snyder altimeter setting and increase LPV DA to 2677 feet, LNAV/VNAV DA to 2785 feet, and all MDAs 80 feet; increase LNAV/VNAV visibility all Cats ¼ SM, LNAV visibility Cats C and D ½ SM, and Circling Cat C and D visibility ¼ SM.

**MISSED APPROACH:**  
Climb to 4400 direct TORYO and hold.

AWOS-3 <b>119.025</b>	ABILENE APP CON <b>127.2 282.3</b>	UNICOM <b>122.8</b> (CTAF)
--------------------------	---------------------------------------	-------------------------------



ELEV 2380 TDZE 2355

REIL Rwy 17-35  
MIRL Rwy 4-22 and 17-35

4400 TORYO

VGSI and RNAV glidepath not coincident (VGSI Angle 3.00/TCH 40).

5 NM Holding Pattern

WOGUG

166° 4400

346° 4000

GP 3.00° TCH 52

1.9 NM 3.1 NM 7.2 NM

CATEGORY	A	B	C	D
LPV DA	2605-1		250 (300-1)	
LNAV/VNAV DA	2713-1½		358 (400-1½)	
LNAV MDA	2820-1	465 (500-1)	2820-1½	465 (500-1½)
CIRCLING	2880-1	500 (500-1)	3080-2 700 (700-2)	3080-2¼ 700 (700-2¼)

SC-2, 07 AUG 2025 to 04 SEP 2025

SC-2, 07 AUG 2025 to 04 SEP 2025