

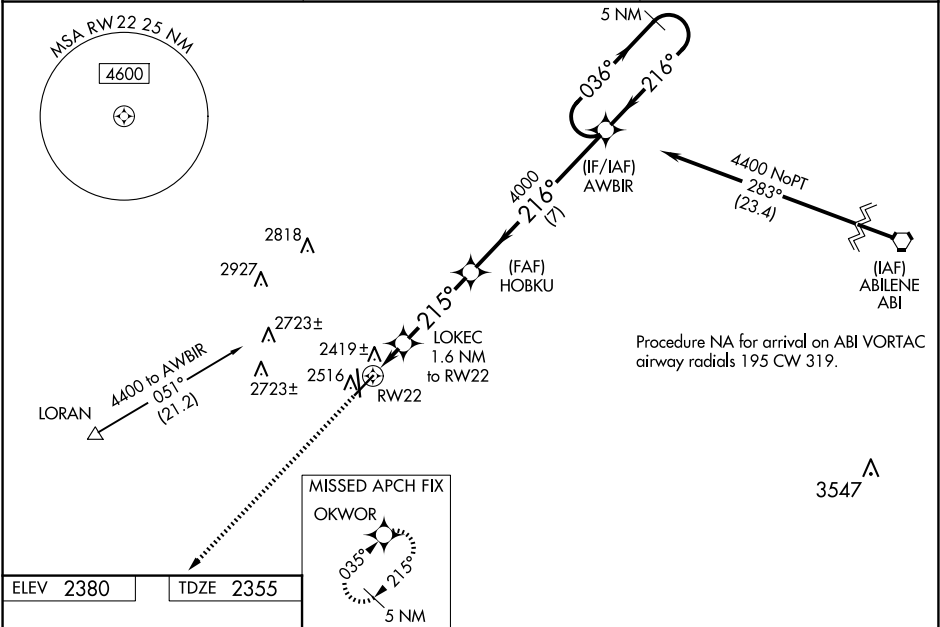
WAAS CH <b>49125</b> <b>W22A</b>	APP CRS <b>215°</b>	Rwy Idg TDZE Apt Elev	<b>5658</b> <b>2355</b> <b>2380</b>
--	------------------------	-----------------------------	---

RNAV (GPS) RWY 22  
AVENGER FLD (SWW)

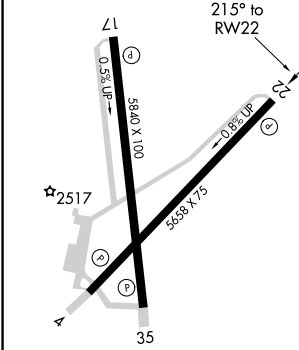
⚠ When VGSI inop, Circling Rwy 17 and 22 NA at night. Baro-VNAV NA when using Snyder altimeter setting. For uncompensated Baro-VNAV systems, LNAV/VNAV NA below -19°C (-2°F) or above 29°C (84°F). When VGSI inop, Straight in/Circling Rwy 22 procedure NA at night. DME/DME RNP-0.3 NA. Visibility reduction by helicopters NA. When local altimeter setting not received, use Snyder altimeter setting and increase LPV and LNAV/VNAV DA to 2677 feet, increase all MDAs 80 feet; increase LPV and LNAV/VNAV visibility all Cats 1/8 SM, LNAV visibility Cats C and D and Circling Cat C and D visibility 1/4 SM.

MISSED APPROACH:  
Climb to 4400 direct  
OKWOR and hold.

AWOS-3 <b>119.025</b>	ABILENE APP CON <b>127.2 282.3</b>	UNICOM <b>122.8</b> (CTAF)
--------------------------	---------------------------------------	-------------------------------



ELEV <b>2380</b>	TDZE <b>2355</b>
------------------	------------------



4400

↑

OKWOR

✧

AWBIR

5 NM Holding Pattern

036°

← 216°

4400

\*LNAV only.

RW22

LOKEC 1.6 NM to RW22

\*2880

HOBKU

4000

215°

216°

4000

GP 3.00° TCH 40

1.6 NM

3.5 NM

7 NM

CATEGORY	A	B	C	D
LPV DA	2605-1		250 (300-1)	
LNAV/VNAV DA	2605-1		250 (300-1)	
LNAV MDA	2680-1		325 (300-1)	
CIRCLING	2880-1	500 (500-1)	3080-2 700 (700-2)	3080-2¼ 700 (700-2¼)

REIL Rwy 17-35  
MIRL Rwy 4-22 and 17-35