


VORTAC GGG	APP CRS	Rwy Idg	9200
112.9	125°	TDZE	358
Chan 76		Apt Elev	366

VOR/DME or TACAN RWY 13

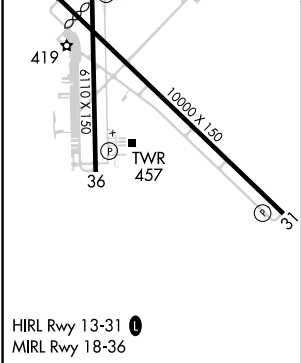
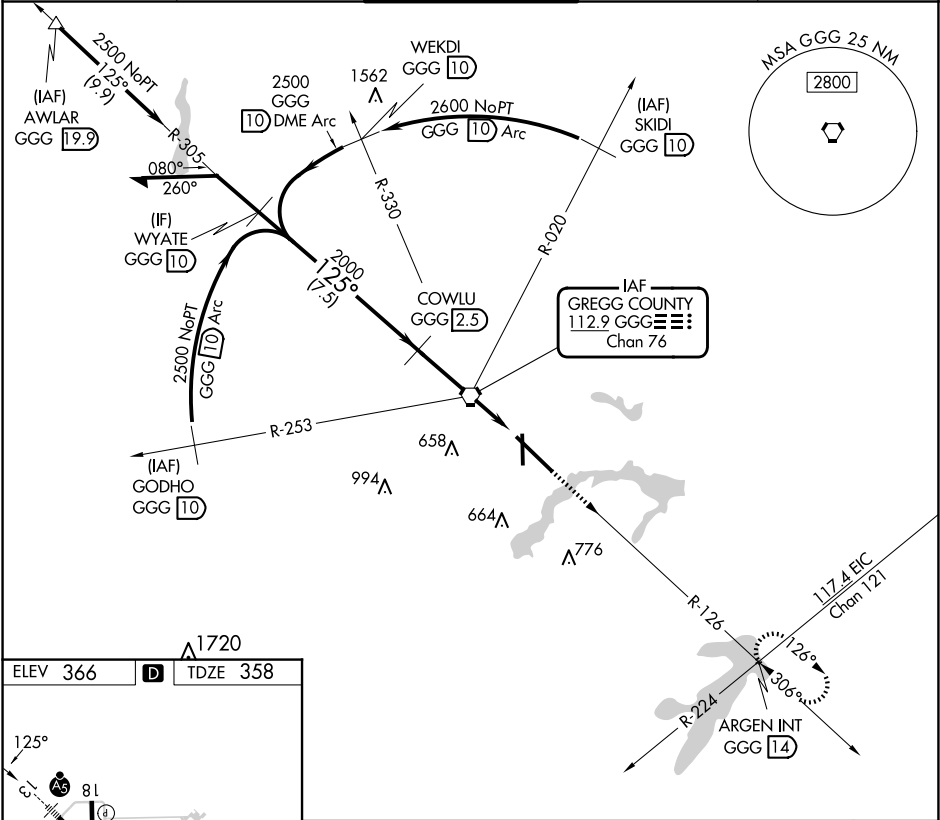
EAST TEXAS RGNL (GGG)

⚠ For inop ALS, increase S-13 Cat C/D/E visibility to 1½ SM. When local altimeter setting not received use Gilmer altimeter setting and increase all MDA 60 feet, S-13 and Circling Cats C/D/E visibility ¼ SM. VDP NA when using Gilmer altimeter setting. For inop ALS when using Gilmer altimeter setting increase S-13 Cat C/D/E visibility to 1½ SM.

MALS 

MISSED APPROACH:
Climb to 3000 via GGG
R-126 to ARGENT INT/GGG
14 DME and hold.

ATIS	LONGVIEW APP CON*	EASTEX TOWER*	GND CON	UNICOM
119.65	124.675 257.975	119.2(CTAF) 377.05	121.6	122.95



<div>Remain within 15 NM</div> <div>GGG VORTAC</div> <div>COWLU GGG (2.5)</div> <div>2500 305° 125° 2000</div> <div>GGG (1) 3.08° TCH 45</div> <div>GGG (2.4)</div> <div>2.5 NM 1 NM 1.4 NM</div>					<div>3000</div> <div>GGG R-126</div> <div>ARGEN INT</div>
CATEGORY	A	B	C	D	E
S-13	860/24 502 (500-½)		860/55 502 (500-1)		860/55 502 (500-1)
CIRCLING	860-1 494 (500-1)		980-1¾ 614 (700-1¾)	1080-2¼ 714 (600-2¼)	1080-2½ 714 (800-2½)