
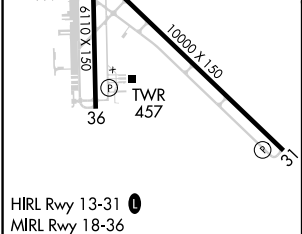
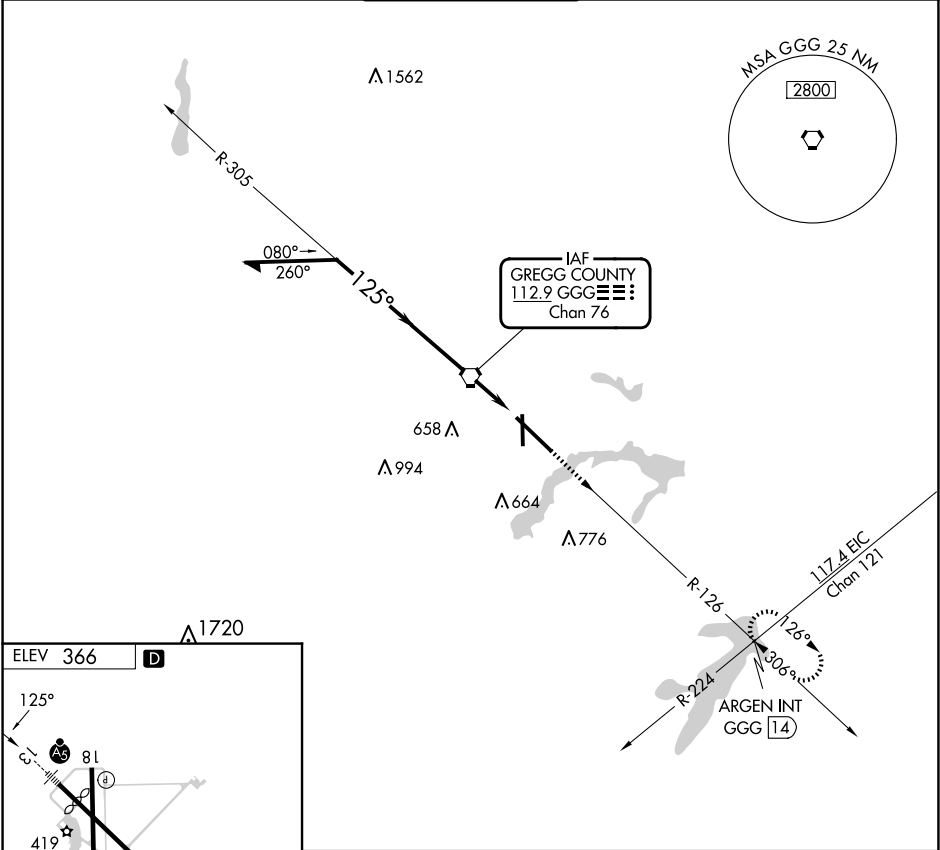


VORTAC GGG	APP CRS	Rwy Idg	N/A
112.9	125°	TDZE	N/A
Chan 76		Apt Elev	366

VOR-A  
EAST TEXAS RGNL (GGG)

 When local altimeter setting not received, use Gilmer altimeter setting and increase all MDA 60 feet and Circling visibility Cat C/D ¼ SM.	MISSED APPROACH: Climb to 3000 via GGG VORTAC R-126 to ARGEN Int/GGG 14 DME and hold.
--	---

ATIS 119.65	LONGVIEW APP CON★ 124.675 257.975	EASTEX TOWER★ 119.2 (CTAF) 377.05	GND CON 121.6	UNICOM 122.95
----------------	--------------------------------------	--------------------------------------	------------------	------------------



Remain within 10 NM		GGG VORTAC	3000	ARGEN INT
2600		305°	GGG R-126	
125°		1400	GGG 2.3	
4.16°		TCH 45		
2.3 NM				
CATEGORY	A	B	C	D
CIRCLING	860-1	494 (500-1)	980-1¼ 614 (700-1¼)	1080-2¼ 714 (800-2¼)

FAF to MAP 2.3 NM					
Knots	60	90	120	150	180
Min:Sec	2:18	1:32	1:09	0:55	0:46

SC-2, 07 AUG 2025 to 04 SEP 2025

SC-2, 07 AUG 2025 to 04 SEP 2025