

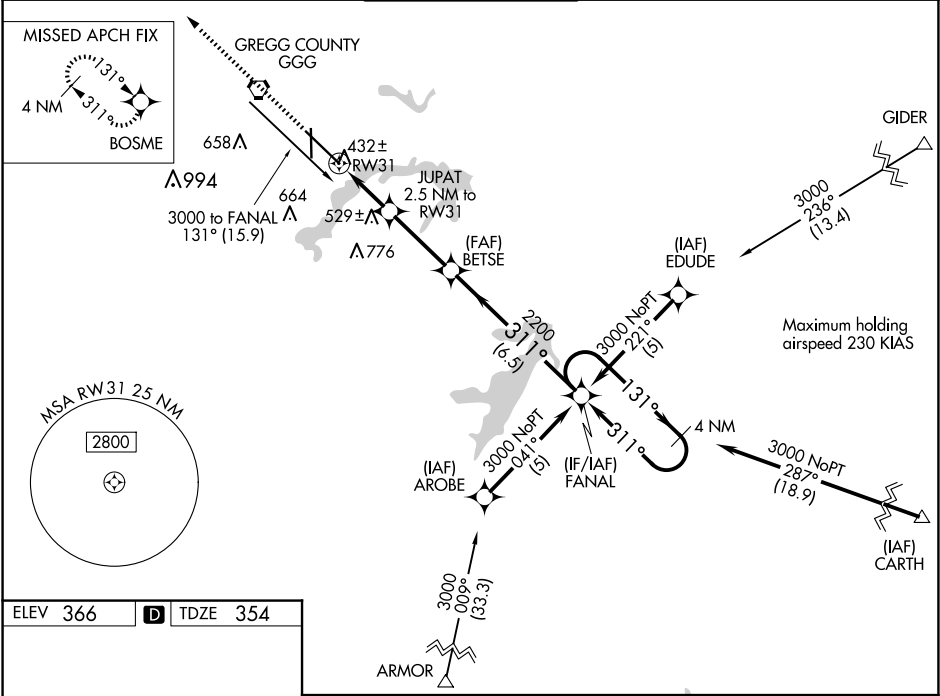
WAAS CH 53504 W31A	APP CRS 311°	Rwy Idg 9200 TDZE 354 Apt Elev 366
----------------------------------------	------------------------	---------------------------------------------------------------

RNAV (GPS) RWY 31

EAST TEXAS RGNL (GGG)

RNP APCH - GPS		MISSED APPROACH: Climb to 2600 direct BOSME and hold.	
<div><div></div><div>Baro-VNAV and VDP NA when using Gilmer altimeter setting. For uncompensated Baro-VNAV systems, LNAV/VNAV NA below -15°C or above 54°C. When local altimeter setting not received, use Gilmer altimeter setting and increase all DA 59 feet, all MDA 60 feet. Increase LPV visibility all Cats ¼ SM and Circling visibility Cats C/D/E ¼ SM.</div></div>			

ATIS 119.65	LONGVIEW APP CON★ 124.675 257.975	EASTEX TOWER★ 119.2(CTAF) 0377.05	GND CON 121.6	UNICOM 122.95
-----------------------	---------------------------------------------	---------------------------------------------	-------------------------	-------------------------



<div><div></div><div>2600</div><div>BOSME</div></div>		<div><div></div><div>JUPAT 2.5 NM to RW31</div><div>BETSE</div><div>2200</div></div>		<div><div></div><div>FANAL</div><div>4 NM Holding Pattern</div><div>131°</div><div>311°</div><div>3000</div></div>	
<div><div></div><div>1.2</div><div>1.3</div><div>3.1 NM</div><div>6.5 NM</div></div>		<div><div></div><div>1200</div><div>2200</div></div>		<div><div></div><div>GP 3.00°</div><div>TCH 50</div></div>	
CATEGORY	A	B	C	D	E
LPV DA	604-3/4 250 (300-3/4)				
LNAV/VNAV DA	682-1 328 (400-1 1/4)				
LNAV MDA	800-1	446 (500-1)	800-1 3/8 446 (500-1 3/8)	800-1 1/2	446 (500-1 1/2)
CIRCLING	860-1	494 (500-1)	980-1 3/4 614 (700-1 3/4)	1080-2 1/4 714 (800-2 1/4)	1080-2 1/2 714 (800-2 1/2)