

WAAS CH 61100 W13A	APP CRS 131°	Rwy Idg TDZE Apt Elev	9200 358 366
--	------------------------	-----------------------------	---

RNAV (GPS) RWY 13

EAST TEXAS RGNL (GGG)

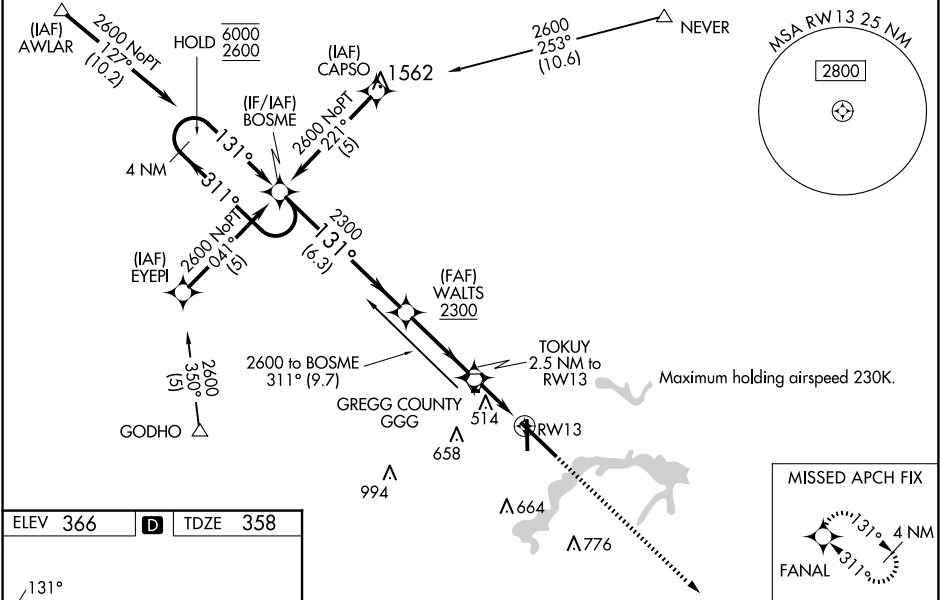
RNP APCH-GPS.

⚠ Baro-VNAV and VDP NA when using Gilmer altimeter setting. For inop ALS, increase LPV Cat E visibility to RVR 4000, LNAV/VNAV all Cats visibility to RVR 5500, and LNAV Cat E visibility to 1¼ SM. When local altimeter setting not received use Gilmer altimeter setting and increase LPV DA to 671 feet; increase LNAV/VNAV DA to 785 feet; increase all MDA 60 feet, and LNAV visibility Cat C to RVR 5000, and Circling visibility Cats C/D/E ¼ SM. For inop ALS when using Gilmer altimeter setting, increase LPV all Cats visibility to RVR 4500, LNAV/VNAV Cat E visibility to 1¼ SM, and LNAV Cats C/D/E visibility to 1¾ SM. For uncompensated Baro-VNAV systems, LNAV/VNAV NA below -15°C or above 54°C.

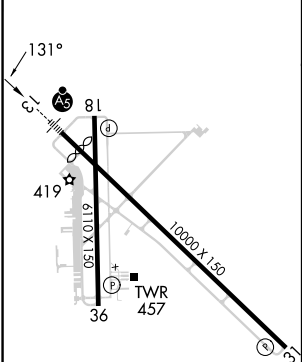


MISSED APPROACH:
Climb to 3000 direct
FANAL and hold.

ATIS 119.65	LONGVIEW APP CON★ 124.675 257.975	EASTEX TOWER★ 119.2 (CTAF) 1377.05	GND CON 121.6	UNICOM 122.95
-----------------------	---	--	-------------------------	-------------------------



ELEV 366	D	TDZE 358
----------	----------	----------



HIRL Rwy 13-31
MIRL Rwy 18-36

4 NM Holding Pattern		BOSME		WALT3		TOKUY	
6000 ← 311°		2600 → 131°		2300		1200	
GP 3.00°		TCH 42		6.3 NM		3.4 NM	
CATEGORY		A		B		C	
LPV DA		612/24		254 (300-½)			
LNAV/VNAV DA		726/40		368 (400-¾)			
LNAV MDA		780/24		422 (500-½)		780/50 422 (500-1)	
CIRCLING		860-1		494 (500-1)		980-1¾ 1080-2¼ 1080-2½	
						614 (700-1¾) 714 (800-2¼) 714 (800-2½)	