

|           |         |          |      |
|-----------|---------|----------|------|
| LOC I-GGG | APP CRS | Rwy Idg  | 9200 |
| 109.5     | 131°    | TDZE     | 358  |
|           |         | Apt Elev | 366  |

ILS or LOC RWY 13  
EAST TEXAS RGNL (GGG)

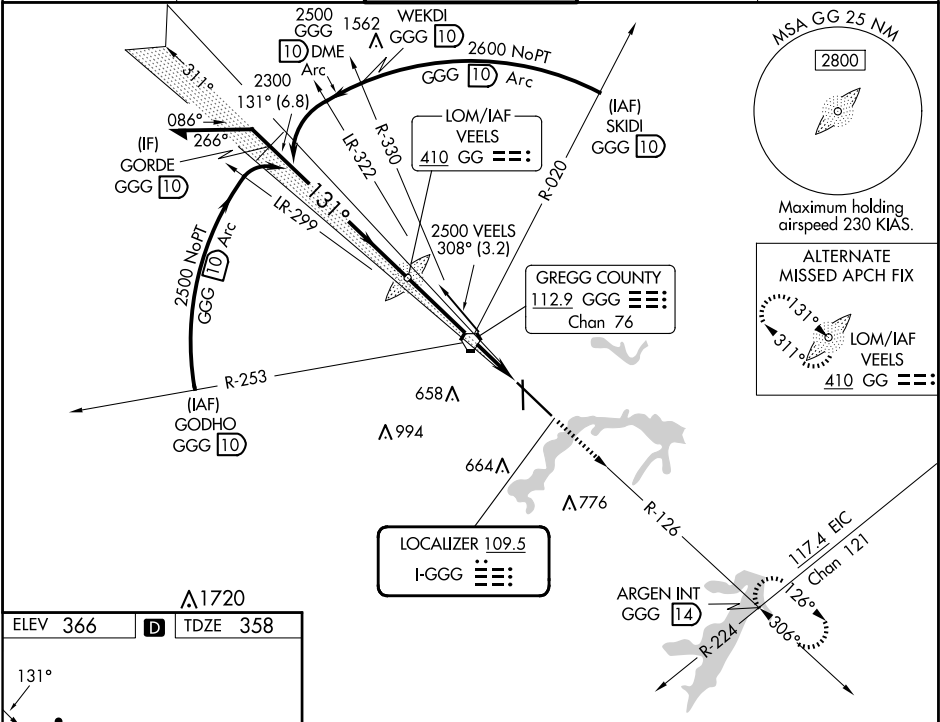
ADF or DME required for procedure entry.

▼ For inop ALS, increase S-ILS 13 Cat E visibility to RVR 4000, S-LOC 13 Cat C/D/E visibility to 1 3/8 SM. When local altimeter setting not received use Gilmer altimeter setting and ▲ increase DA 59 feet, all MDA 60 feet, increase LOC and Circling Cat C/D/E visibility 1/4 SM. For inop ALS when using Gilmer altimeter setting increase S-ILS 13 all Cats to RVR 4500, S-LOC 13 Cat C/D/E visibility to 1 3/8 SM. \* RVR 1800 authorized with the use of FD or AP or HUD to DA (NA when using Gilmer altimeter setting).

MALSR

MISSED APPROACH:  
Climb to 3000 via GGG  
VORTAC R-126 to  
ARGEN Int/GGG 14 DME  
and hold.

|        |                    |                     |         |        |
|--------|--------------------|---------------------|---------|--------|
| ATIS   | LONGVIEW APP CON ★ | EASTEX TOWER ★      | GND CON | UNICOM |
| 119.65 | 124.675 257.975    | 119.2 (CTAF) 137.05 | 121.6   | 122.95 |



ELEV 366 D TDZE 358

FAF to MAP 5.6 NM

|         |      |      |      |      |      |
|---------|------|------|------|------|------|
| Knots   | 60   | 90   | 120  | 150  | 180  |
| Min:Sec | 5:36 | 3:44 | 2:48 | 2:14 | 1:52 |

Diagram showing missed approach climb to 3000 via GGG R-126 and ARGEN INT.

| CATEGORY | A  | B             | C                         | D                          | E                          |
|----------|--|---------------|---------------------------|----------------------------|----------------------------|
| S-ILS 13 | *558/24 200 (200-1/2) 558/24 200 (200-1/2) |               |                           |                            |                            |
| S-LOC 13 | 860/24                                     | 502 (500-1/2) | 860/50                    | 502 (500-1)                | 860/60 502 (500-1/4)       |
| CIRCLING | 860-1                                      | 494 (500-1)   | 980-1 3/4 614 (700-1 3/4) | 1080-2 1/4 714 (800-2 1/4) | 1080-2 1/2 714 (800-2 1/2) |

SC-2, 07 AUG 2025 to 04 SEP 2025

SC-2, 07 AUG 2025 to 04 SEP 2025