

WAAS	Rwy Ldg	4502
CH 50144	APP CRS	018°
W02A	TDZE	152
	Apt Elev	163

RNAV (GPS) RWY 2

WATSONVILLE MUNI (WVI)

RNP APCH - GPS.

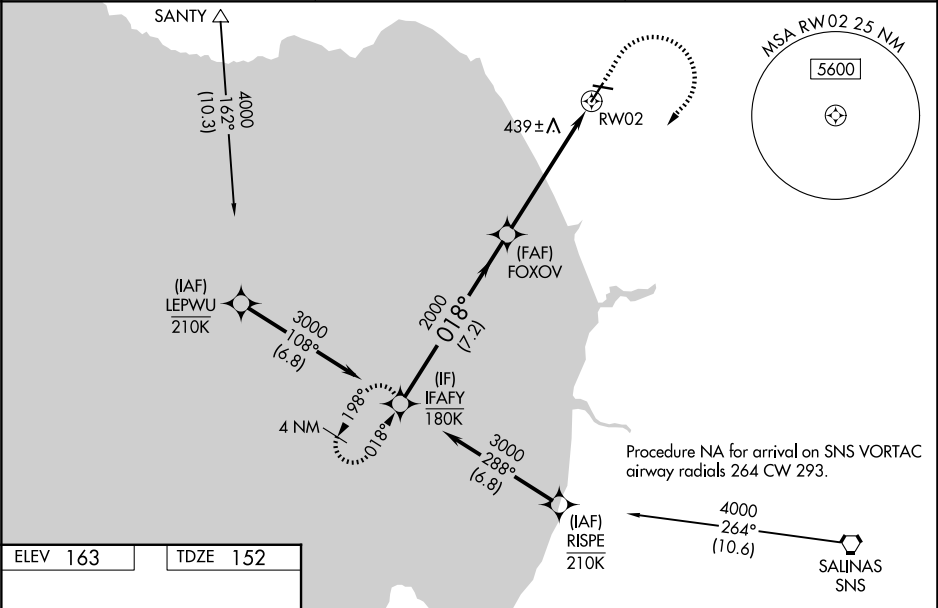
▼

⚠

Rwy 2 helicopter visibility reduction below ¾ SM NA. Circling Rwy 9, 27 NA at night. For uncompensated Baro-VNAV systems, LNAV/VNAV NA below 0°C or above 54°C. Circling NA west of Rwy 2-20. When local altimeter setting not received, use Monterey altimeter setting and increase LPV DA to 510 feet and all visibilities ½ SM. Increase LNAV/VNAV DA to 834 feet and all visibilities ½ SM. Increase all MDAs 80 feet and LNAV visibility Cat C/D ½ SM, and Circling visibility Cat C ½ SM. Baro-VNAV and VDP NA when using Monterey altimeter setting.

MISSED APPROACH: (Do not exceed 200K until IFAFY) Climb to 740 then climbing right turn to 3000 direct IFAFY and hold, continue climb-in-hold to 3000.

ASOS 132.275	NORCAL APP CON 127.15 307.125	UNICOM 122.8 (CTAF) 0
-----------------	----------------------------------	--------------------------



ELEV 163	TDZE 152
----------	----------

REIL Rwy 2 0

MIRL Rwy 2-20 0

3998 X 98

4502 X 149

0.4% UP

0.7% UP

018°

VGSI and RNAV glidepath not coincident (VGSI Angle 3.00/TCH 43).

IFAFY

FOXOV

GP 3.00°

TCH 56

7.2 NM

4.1 NM

1.6 NM

1.6 NM to RW02

RW02

CATEGORY	A	B	C	D
LPV DA	448-7⁄8 296 (300-7⁄8)			
LNAV/VNAV DA	772-1¾ 620 (700-1¾)			
LNAV MDA	700-1 548 (600-1)	700-1½ 548 (600-1½)		
CIRCLING	700-1 537 (600-1)	700-1½ 537 (600-1½)	1160-3 997 (1000-3)	