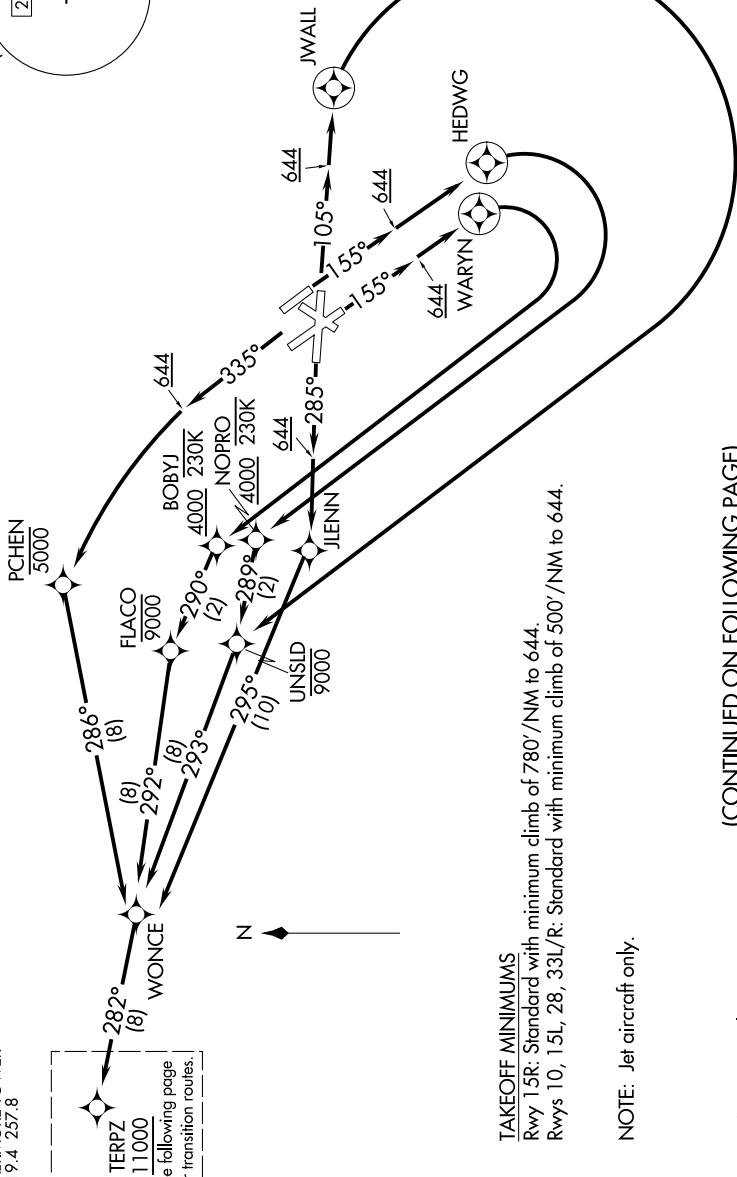
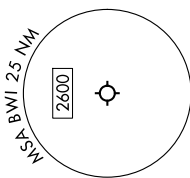


TOP ALTITUDE:
17000

RNAV 1 - DME/DME/IRU or GPS.
RADAR required.

NE-3, 07 AUG 2025 to 04 SEP 2025



TAKEOFF MINIMUMS

Rwy 15R: Standard with minimum climb of 780'/NM to 644.

Rwys 10, 15L, 28, 33L/R: Standard with minimum climb of 500'/NM to 644.

NOTE: Jet aircraft only.

(CONTINUED ON FOLLOWING PAGE)

NOTE: Chart not to scale.

NE-3, 07 AUG 2025 to 04 SEP 2025