

WAAS  
CH **82207**  
**W33A**

APP CRS  
**335°**

Rwy Ldg  
TDZE **143**  
Apt Elev **143**

**8301**  
**143**  
**143**

**RNAV (GPS) Y RWY 33L**  
BALTIMORE/WASHINGTON INTL THURGOOD MARSHALL (BWI)

RNP APCH-GPS.  
For uncompensated Baro-VNAV systems, LNAV/VNAV NA below -11°C or above 54°C.

MALS  
A5

MISSED APPROACH: Climb to 3000 direct BMORE and hold.

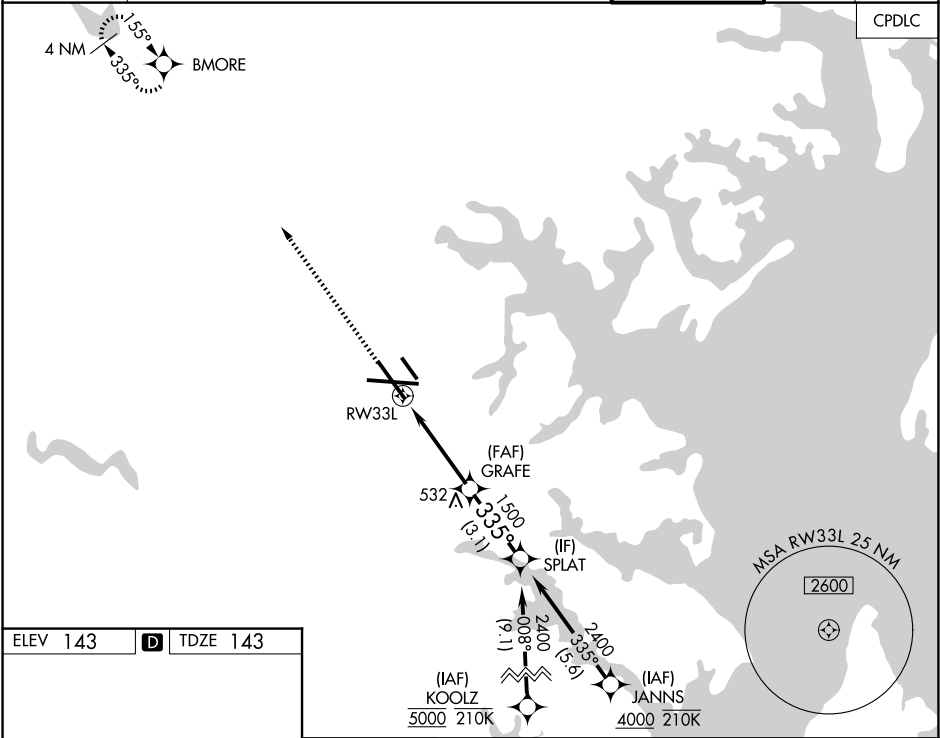
D-ATIS  
**115.1 127.8**

POTOMAC APP CON  
**119.0 282.275** (020°-100°) **119.7 290.475** (131°-180°)  
**124.55 317.425** (101°-130°) **128.7 307.9** (181°-019°)

**BALTIMORE TOWER**  
**119.4 257.8**

GND CON  
**121.9**

CLNC DEL  
**118.05**



ELEV **143** **D** TDZE **143**

3000 BMORE

VGSI and RNAV glidepath not coincident (VGSI Angle 3.00/TCH 72).

SPLAT

GRAFE

1.2 NM to RW33L

1.500

2400

GP 3.00° TCH 55

| CATEGORY     | A                    | B                    | C                      | D                      |
|--------------|----------------------|----------------------|------------------------|------------------------|
| LPV DA       |                      | 343/18               | 200 (200-½)            |                        |
| LNAV/VNAV DA |                      | 432/24               | 289 (300-½)            |                        |
| LNAV MDA     | 600/24               | 457 (500-½)          | 600/45                 | 457 (500-¾)            |
| CIRCLING     | 640-1<br>497 (500-1) | 660-1<br>517 (600-1) | 700-1½<br>557 (600-1½) | 880-2¼<br>737 (800-2¼) |