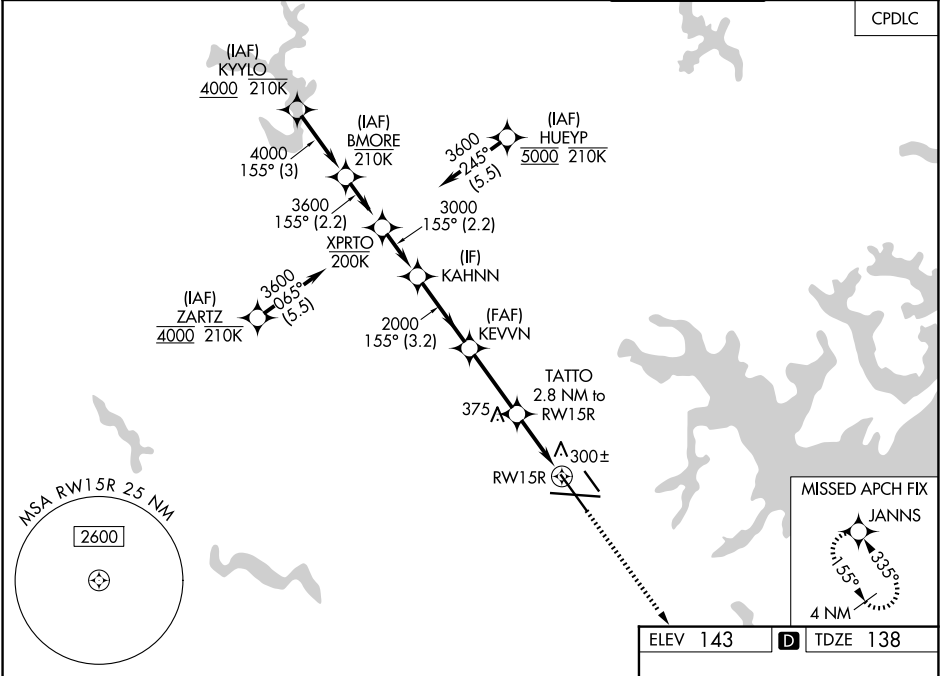


WAAS CH 66007 W15B	APP CRS 155°	Rwy Ldg TDZE 138 Apt Elev 143	8301
--	------------------------	---	-------------

RNAV (GPS) Y RWY 15R

BALTIMORE/WASHINGTON INTL THURGOOD MARSHALL (BWI)

RNP APCH - GPS.				MALSR		MISSED APPROACH: Climb to 2500 direct JANNS and hold.	
▼ For uncompensated Baro-VNAV systems, LNAV/VNAV NA below -11°C or above 54°C. ▲ Simultaneous approach authorized with Rwy 15L. For inop ALS, increase LNAV/VNAV all Cats visibility to RVR 6000. * RVR 1800 authorized with use of FD or AP or HUD to DA.				AS			
D-ATIS 115.1 127.8	POTOMAC APP CON 119.0 282.275 (020°-100°) 119.7 290.475 (131°-180°) 124.55 317.425 (101°-130°) 128.7 307.9 (181°-019°)			BALTIMORE TOWER 119.4 257.8		GND CON 121.9	CLNC DEL 118.05



KAHNN		VGSi and RNAV glidepath not coincident (VGSi Angle 3.00/TCH 73).		2500	JANNS
3000		155°		2000	KEVVN
GP 3.00°		TCH 56		1080	TATTO 2.8 NM to RWY 15R
3.2 NM		2.9 NM		1.7 NM	1.1 NM to RWY 15R
CATEGORY	A	B	C	D	
LPV DA	*338/24		200 (200-½)		
LNAV/VNAV DA	557/40		419 (500-¾)		
LNAV MDA	560/24	422 (500-½)	560/40	422 (500-¾)	
CIRCLING	640-1 497 (500-1)	660-1 517 (600-1)	700-1½ 557 (600-1½)	880-2¼ 737 (800-2¼)	
TDZ/CL Rwy 10 and 33L REIL Rwy 15L and 33R HIRL all Rwy					

RNAV (GPS) Y RWY 15R

NE-3, 07 AUG 2025 to 04 SEP 2025

NE-3, 07 AUG 2025 to 04 SEP 2025