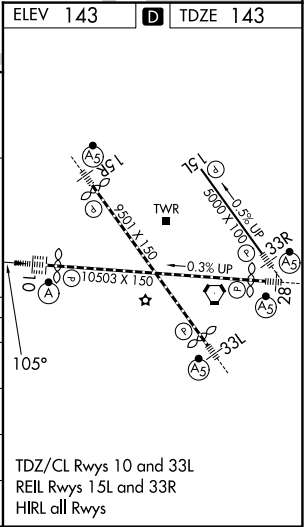
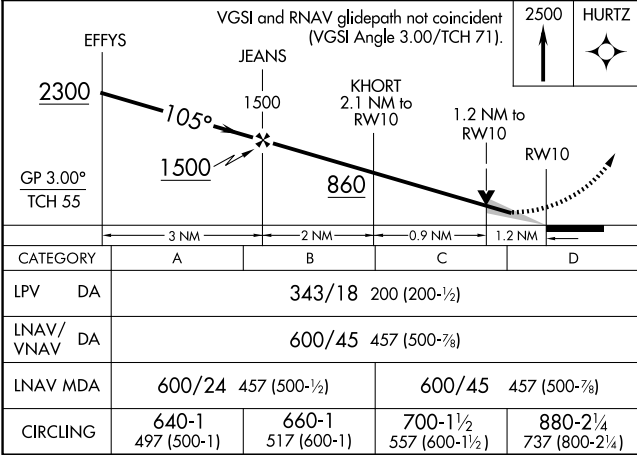
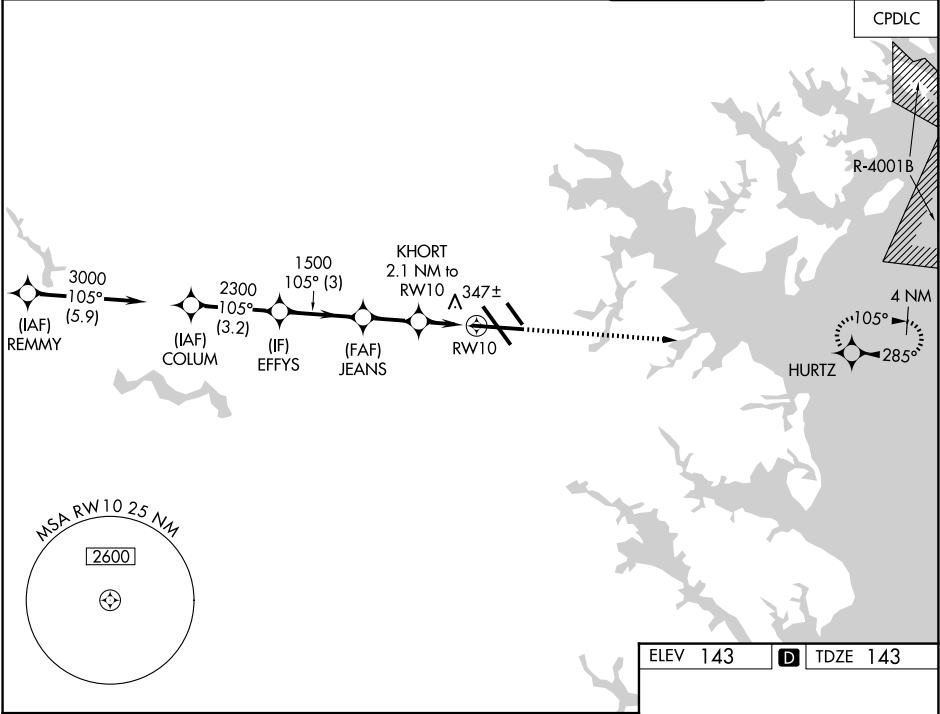


| | | | |
|--|------------------------|---|-------------|
| WAAS CH 53707 W10A | APP CRS 105° | Rwy Ldg TDZE 143 Apt Elev 143 | 9953 |
|--|------------------------|---|-------------|

RNAV (GPS) Y RWY 10

BALTIMORE/WASHINGTON INTL THURGOOD MARSHALL (BWI)

| | | | | |
|---|--|--|--|-------------------------|
| RNP APCH - GPS. | | ALSF-2 | MISSED APPROACH: Climb to 2500 direct HURTZ and hold. | |
| For uncompensated Baro-VNAV systems, LNAV/VNAV NA below -11°C or above 54°C. | | | | |
| D-ATIS 115.1 127.8 | POTOMAC APP CON (020°-100°) 119.0 282.275 (101°-130°) 124.55 317.425 | (131°-180°) 119.7 290.475 (181°-019°) 128.7 307.9 | BALTIMORE TOWER 119.4 257.8 | GND CON 121.9 |
| | | | CLNC DEL 118.05 | CPDLC |



NE-3, 07 AUG 2025 to 04 SEP 2025

NE-3, 07 AUG 2025 to 04 SEP 2025