

APP CRS
285°

Rwy Ldg
TDZE
143

Apt Elev
143

RNP AR APCH - GPS.

▼ For uncompensated Baro-VNAV systems, procedure NA below -11°C or above 54°C. For inop ALS, increase RNP 0.30 all Cats visibility to RVR 5500.

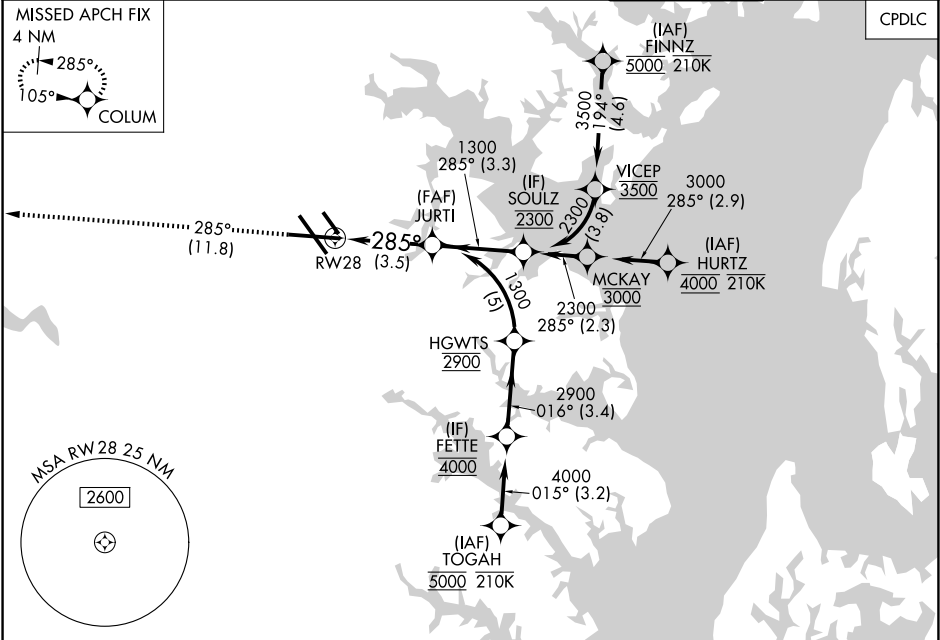
ALSR

MISSED APPROACH: Climb to 2500 on track 285° to COLUM and hold.

RNAV (RNP) Z RWY 28

BALTIMORE/WASHINGTON INTL THURGOOD MARSHALL (BWI)

D-ATIS 115.1 127.8	POTOMAC APP CON (020°-100°) 119.0 282.275 (101°-130°) 124.55 317.425	(131°-180°) 119.7 290.475 (181°-019°) 128.7 307.9	BALTIMORE TOWER 119.4 257.8	GND CON 121.9	CLNC DEL 118.05
-----------------------	--	--	--------------------------------	------------------	--------------------



ELEV 143

D

TDZE 143

2500

COLUM

VGSI and RNAV glidepath not coincident (VGSI Angle 3.00°/TCH 75°).

See planview for multiple IF locations.

JURTI

1300

GP 3.00°

TCH 55

CATEGORY	A	B	C	D
RNP 0.30 DA	521/35	378 (400-%)		

AUTHORIZATION REQUIRED

NE-3, 07 AUG 2025 to 04 SEP 2025

NE-3, 07 AUG 2025 to 04 SEP 2025