

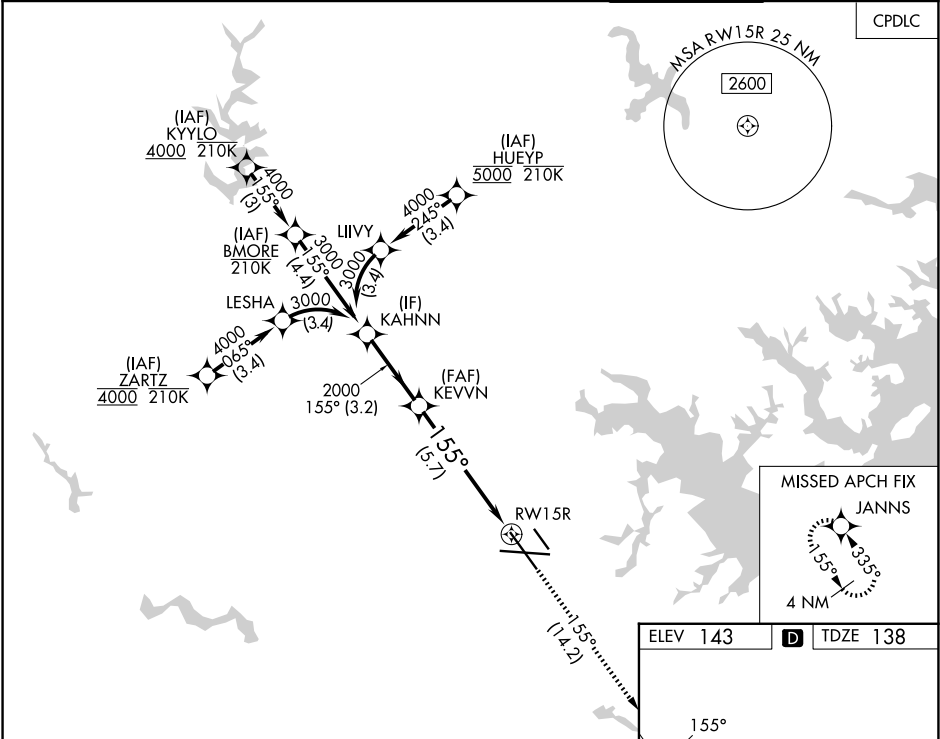
APP CRS	Rwy Ldg	8301
155°	TDZE	138
	Apt Elev	143

RNAV (RNP) Z RWY 15R

BALTIMORE/WASHINGTON INTL THURGOOD MARSHALL (BWI)

RNP AR APCH - GPS.	MALSR	MISSED APPROACH: Climb to 2500 on track 155° to JANNS and hold.
▼ For uncompensated Baro-VNAV systems, procedure NA below -11°C or above 54°C. Simultaneous approach authorized with Rwy 15L. For inop ALS, increase RNP 0.11 DA all Cats visibility to RVR 5500.		

D-ATIS	POTOMAC APP CON	BALTIMORE TOWER	GND CON	CLNC DEL
115.1 127.8	119.0 282.275 (020°-100°) 119.7 290.475 (131°-180°) 124.55 317.425 (101°-130°) 128.7 307.9 (181°-019°)	119.4 257.8	121.9	118.05



VGSi and RNAV glidepath not coincident (VGSi Angle 3.00/TCH 73).					2500	JANNS
KAHNN					↑ tr 155°	
3000					2000	
GP 3.00°						
TCH 56						
155°						
2000						
3.2 NM					5.7 NM	
CATEGORY	A	B	C	D		
RNP 0.11 DA	513/35		375 (400-5%)			
RNP 0.30 DA	587/45		449 (500-7%)			
AUTHORIZATION REQUIRED						
TDZ/CL Rwy 10 and 33L REIL Rwy 15L and 33R HIRL all Rwy						

NE-3, 07 AUG 2025 to 04 SEP 2025

NE-3, 07 AUG 2025 to 04 SEP 2025