

APP CRS  
**105°**

Rwy Ldg  
TDZE  
**143**

Apt Elev  
**143**

**RNAV (RNP) Z RWY 10**

BALTIMORE/WASHINGTON INTL THURGOOD MARSHALL (BWI)

RNP AR APCH - GPS.

For uncompensated Baro-VNAV systems, procedure NA below -11°C or above 54°C. For inop ALS, increase RNP 0.11 all Cats visibility to RVR 4500, increase RNP 0.30 all Cats visibility to 1 3/8 SM.

ALSF-2  
A

MISSED APPROACH:  
Climb to 2500 on track 105° to HURTZ and hold.

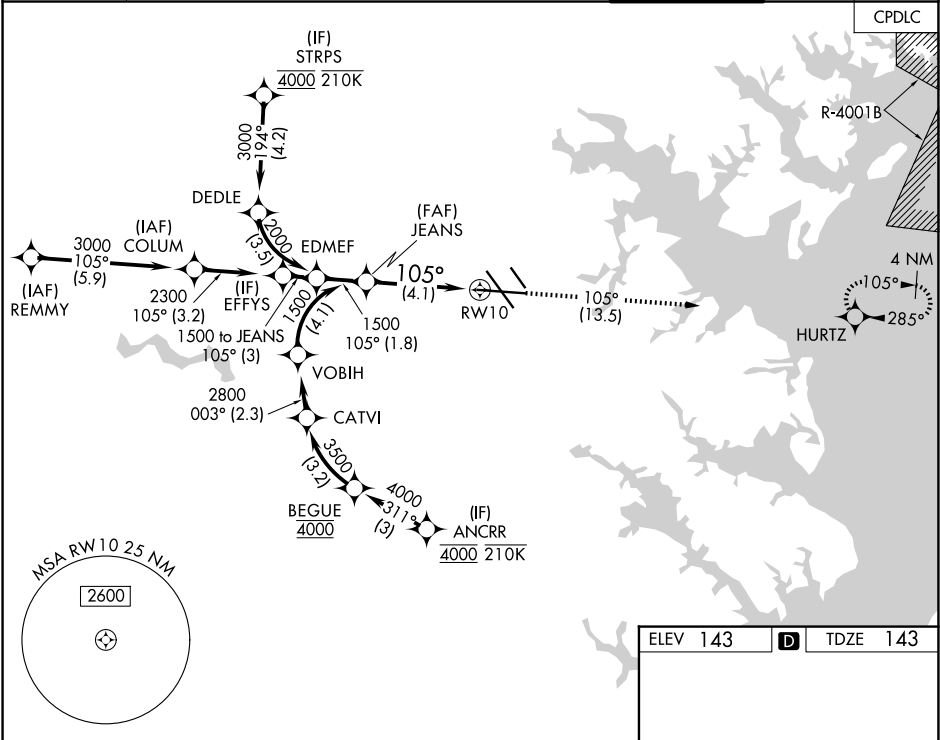
D-ATIS  
**115.1 127.8**

POTOMAC APP CON  
**119.0 282.275** (020°-100°) **119.7 290.475** (131°-180°)  
**124.55 317.425** (101°-130°) **128.7 307.9** (181°-019°)

BALTIMORE TOWER  
**119.4 257.8**

GND CON  
**121.9**

CLNC DEL  
**118.05**



JEANS  
1500

1500

GP 3.00°  
TCH 55

VGSI and RNAV glidepath not coincident  
(VGSI Angle 3.00/TCH 71).

2500  
↑  
tr 105°

HURTZ

105°

RW10

See planview for multiple IF locations.

4.1 NM

CATEGORY	A	B	C	D
RNP 0.11 DA		444/24	301 (400-1/2)	
RNP 0.30 DA		628/50	485 (500-1)	

**AUTHORIZATION REQUIRED**

TDZ/CL Rwys 10 and 33L

REIL Rwys 15L and 33R

HIRL all Rwys