

APP CRS
335°

Rwy Ldg
TDZE
143

8301
143
143

RNAV (RNP) X RWY 33L

BALTIMORE/WASHINGTON INTL THURGOOD MARSHALL (BWI)

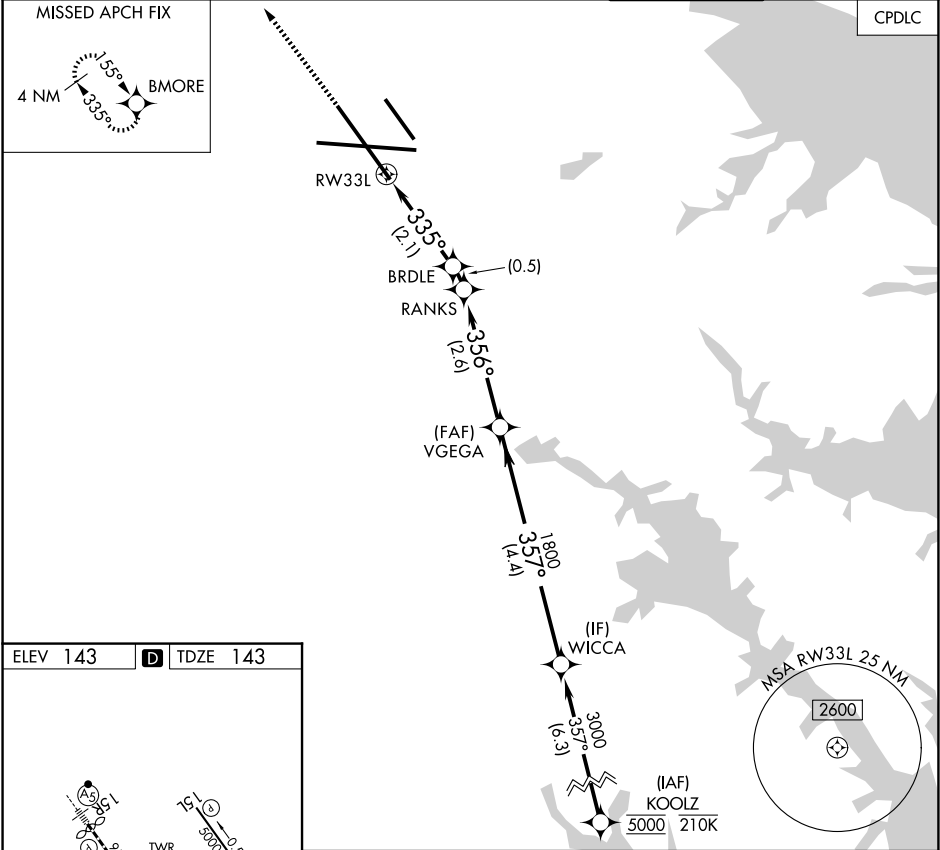
RNP AR APCH - GPS, RF.

MAISR

MISSED APPROACH: Climb to 3000 direct BMORE and hold.

For uncompensated Baro-VNAV systems, procedure NA below -11°C or above 54°C.

D-ATIS	POTOMAC APP CON	BALTIMORE TOWER	GND CON	CLNC DEL
115.1 127.8	(020°-100°) 119.7 290.475 (131°-180°) (101°-130°) 128.7 307.9 (181°-019°)	119.4 257.8	121.9	118.05
119.0 282.275	124.55 317.425			



ELEV 143

D

TDZE 143

TDZ/CL Rwy 10 and 33L

REIL Rwy 15L and 33R

HIRL all Rwy

3000

BMORE

VGSI and RNAV glidepath not coincident (VGSI Angle 3.00°/TCH 72).

WICCA

3000

357°

1800

356°

335°

839

986

1800

1800

GP 3.00°

TCH 55

2.1 NM

0.5 NM

2.6 NM

4.4 NM

CATEGORY	A	B	C	D
RNP 0.30 DA	479/26	336 (400-½)		

AUTHORIZATION REQUIRED

NE-3, 07 AUG 2025 to 04 SEP 2025

NE-3, 07 AUG 2025 to 04 SEP 2025