


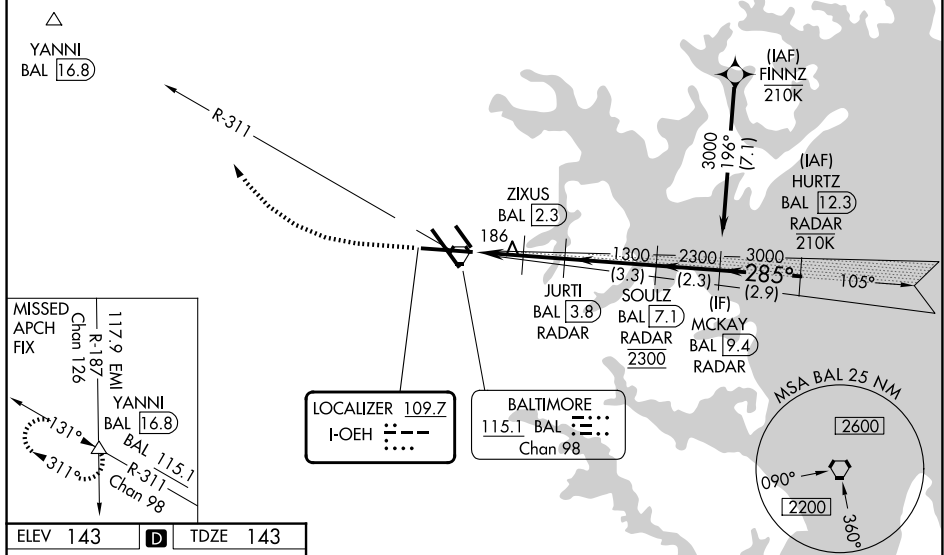


LOC I-OEH <b><u>109.7</u></b>	APP CRS <b>285°</b>	Rwy Ldg TDZE Apt Elev	<b>9803</b> <b>143</b> <b>143</b>
----------------------------------	------------------------	-----------------------------	---

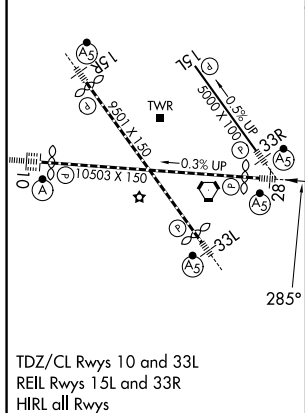
BALTIMORE/  
WASHINGTONILS or LOC RWY 28  
L THURGOOD MARSHALL (BWI)

DME or RADAR required.				MALSR 		MISSED APPROACH: Climb to 1500 then climbing right turn to 2600 on heading 319° and BAL VORTAC R-311 to YANNI INT/ BAL 16.8 DME and hold.	
<p> For inop ALS, increase S-LOC 28 Cat C/D visibility to 1<math>\frac{1}{2}</math> SM and increase ZIXUS fix S-LOC 28 Cat C/D visibility to RVR 4500.</p> <p> * RVR 1800 authorized with use of FD or AP or HUD to DA.</p>							
D-ATIS <b>115.1 127.8</b>		POTOMAC APP CON <b>119.0 282.275</b> (020°-100°) <b>119.7 290.475</b> (131°-180°) <b>124.55 317.425</b> (101°-130°) <b>128.7 307.9</b> (181°-019°)		BALTIMORE TOWER <b>119.4 257.8</b>		GND CON <b>121.9</b>	CLNC DEL <b>118.05</b>

CPDLC



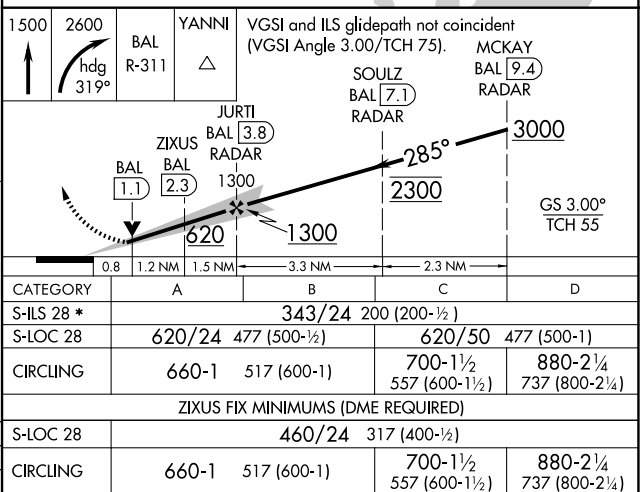
ELEV 143	<b>D</b>	TDZE 143
----------	----------	----------



TDZ/CL Rwy 10 and 33L  
REIL Rwy 15L and 33R  
HIRL all Rwy

FAF to MAP 3.5 NM

Knots	60	90	120	150	180
Min:Sec	3:30	2:20	1:45	1:24	1:10



CATEGORY	A	B	C	D
S-ILS 28 *	343/24 200 (200-½)			
S-LOC 28	620/24	477 (500-½)	620/50	477 (500-1)
CIRCLING	660-1	517 (600-1)	700-1½ 557 (600-1½)	880-2¼ 737 (800-2¼)
ZIXUS FIX MINIMUMS (DME REQUIRED)				
S-LOC 28	460/24 317 (400-½)			
CIRCLING	660-1	517 (600-1)	700-1½ 557 (600-1½)	880-2¼ 737 (800-2¼)